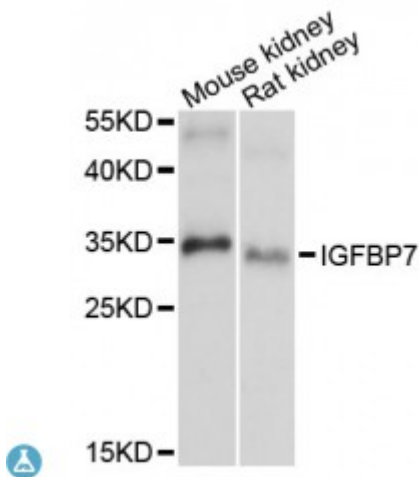


Anti-IGFBP7 Antibody



Description

This gene encodes a member of the insulin-like growth factor (IGF)-binding protein (IGFBP) family. IGFBPs bind IGFs with high affinity, and regulate IGF availability in body fluids and tissues and modulate IGF binding to its receptors. This protein binds IGF-I and IGF-II with relatively low affinity, and belongs to a subfamily of low-affinity IGFBPs. It also stimulates prostacyclin production and cell adhesion. Alternatively spliced transcript variants encoding different isoforms have been described for this gene, and one variant has been associated with retinal arterial macroaneurysm (PMID:21835307).

Model	STJ114990
Host	Rabbit
Reactivity	Mouse, Rat
Applications	WB
Immunogen	Recombinant fusion protein containing a sequence corresponding to amino acids 27-282 of human IGFBP7 (NP_001544.1).
Gene ID	3490
Gene Symbol	IGFBP7
Dilution range	WB 1:500 - 1:2000
Purification	Affinity purification
Note	For Research Use Only (RUO).
Protein Name	Insulin-like growth factor-binding protein 7 IBP-7 IGF-binding protein 7 IGFBP-7 IGFBP-rP1 MAC25 protein PGI2-stimulating factor Prostacyclin-stimulating factor Tumor-derived adhesion factor TAF

Molecular Weight	29.13 kDa
Clonality	Polyclonal
Conjugation	Unconjugated
Isotype	IgG
Formulation	PBS with 0.02% sodium azide, 50% glycerol, pH7.3.
Storage Instruction	Store at -20C. Avoid freeze / thaw cycles.
Database Links	HGNC:5476OMIM:602867Reactome:R-HSA-2559582
Alternative Names	Insulin-like growth factor-binding protein 7 IBP-7 IGF-binding protein 7 IGFBP-7 IGFBP-rP1 MAC25 protein PGI2-stimulating factor Prostacyclin-stimulating factor Tumor-derived adhesion factor TAF
Function	Binds IGF-I and IGF-II with a relatively low affinity, Stimulates prostacyclin (PGI2) production, Stimulates cell adhesion,
Cellular Localization	Secreted
Post-translational Modifications	N-glycosylated,

St John's Laboratory Ltd

F +44 (0)207 681 2580
T +44 (0)208 223 3081

W <http://www.stjohnslabs.com/>
E info@stjohnslabs.com