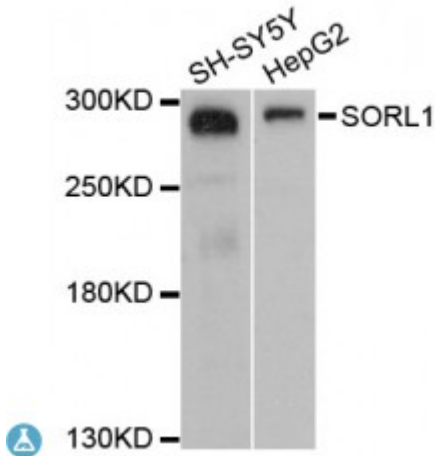


Anti-SORL1 Antibody



Description

This gene encodes a mosaic protein that belongs to at least two families: the vacuolar protein sorting 10 (VPS10) domain-containing receptor family, and the low density lipoprotein receptor (LDLR) family. The encoded protein also contains fibronectin type III repeats and an epidermal growth factor repeat. The encoded preproprotein is proteolytically processed to generate the mature receptor, which likely plays roles in endocytosis and sorting. Mutations in this gene may be associated with Alzheimer's disease.

Model	STJ115014
Host	Rabbit
Reactivity	Human
Applications	WB
Immunogen	Recombinant fusion protein containing a sequence corresponding to amino acids 2065-2214 of human SORL1 (NP_003096.1).
Gene ID	6653
Gene Symbol	SORL1
Dilution range	WB 1:500 - 1:2000
Tissue Specificity	Expressed mainly in brain, where it is most abundant in the cerebellum, cerebral cortex and the occipital pole
Purification	Affinity purification
Note	For Research Use Only (RUO).
Protein Name	Sortilin-related receptor Low-density lipoprotein receptor relative with 11

ligand-binding repeats LDLR relative with 11 ligand-binding repeats LR11
SorLA-1 Sorting protein-related receptor containing LDLR class A repeats