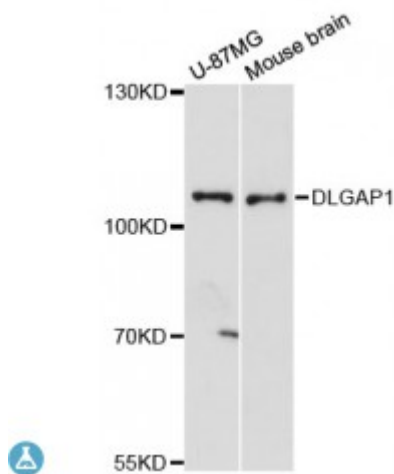


Anti-DLGAP1 Antibody



Model	STJ115027
Host	Rabbit
Reactivity	Human, Mouse
Applications	WB
Immunogen	Recombinant fusion protein containing a sequence corresponding to amino acids 1-250 of human DLGAP1 (NP_001229690.1).
Gene ID	9229
Gene Symbol	DLGAP1
Dilution range	WB 1:500 - 1:2000
Tissue Specificity	Expressed in brain
Purification	Affinity purification
Note	For Research Use Only (RUO).
Protein Name	Disks large-associated protein 1 DAP-1 Guanylate kinase-associated protein hGKAP PSD-95/SAP90-binding protein 1 SAP90/PSD-95-associated protein 1 SAPAP1
Molecular Weight	108.873 kDa
Clonality	Polyclonal
Conjugation	Unconjugated
Isotype	IgG
Formulation	PBS with 0.02% sodium azide, 50% glycerol, pH7.3.
Storage Instruction	Store at -20C. Avoid freeze / thaw cycles.

Database Links	HGNC:2905OMIM:605445Reactome:R-HSA-6794361
Alternative Names	Disks large-associated protein 1 DAP-1 Guanylate kinase-associated protein hGKAP PSD-95/SAP90-binding protein 1 SAP90/PSD-95-associated protein 1 SAPAP1
Function	Part of the postsynaptic scaffold in neuronal cells
Cellular Localization	Cell membrane

St John's Laboratory Ltd

F +44 (0)207 681 2580

T +44 (0)208 223 3081

W <http://www.stjohnslabs.com/>

E info@stjohnslabs.com