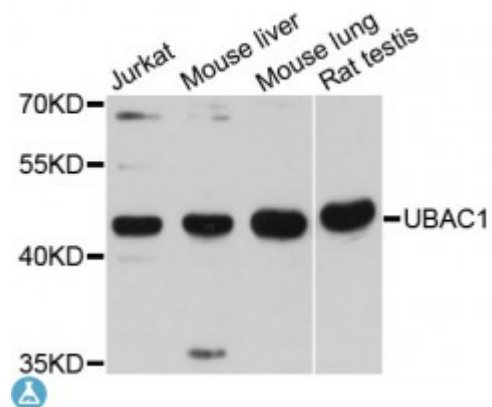


Anti-UBAC1 Antibody



Model	STJ115038
Host	Rabbit
Reactivity	Human, Mouse, Rat
Applications	WB
Immunogen	Recombinant fusion protein containing a sequence corresponding to amino acids 176-405 of human UBAC1 (NP_057256.2).
Gene ID	10422
Gene Symbol	UBAC1
Dilution range	WB 1:500 - 1:2000
Tissue Specificity	Ubiquitous
Purification	Affinity purification
Note	For Research Use Only (RUO).
Protein Name	Ubiquitin-associated domain-containing protein 1 UBA domain-containing protein 1 E3 ubiquitin-protein ligase subunit KPC2 Glioblastoma cell differentiation-related protein 1 Kip1 ubiquitination-promoting complex protein 2
Molecular Weight	45.338 kDa
Clonality	Polyclonal
Conjugation	Unconjugated
Isotype	IgG
Formulation	PBS with 0.02% sodium azide, 50% glycerol, pH7.3.

Storage Instruction	Store at -20C. Avoid freeze / thaw cycles.
Database Links	HGNC:30221OMIM:608129Reactome:R-HSA-983168
Alternative Names	Ubiquitin-associated domain-containing protein 1 UBA domain-containing protein 1 E3 ubiquitin-protein ligase subunit KPC2 Glioblastoma cell differentiation-related protein 1 Kip1 ubiquitination-promoting complex protein 2
Function	Non-catalytic subunit of the KPC complex that acts as E3 ubiquitin-protein ligase, Required for poly-ubiquitination and proteasome-mediated degradation of CDKN1B during G1 phase of the cell cycle,
Cellular Localization	Cytoplasm

St John's Laboratory Ltd

F +44 (0)207 681 2580
T +44 (0)208 223 3081

W <http://www.stjohnslabs.com/>
E info@stjohnslabs.com