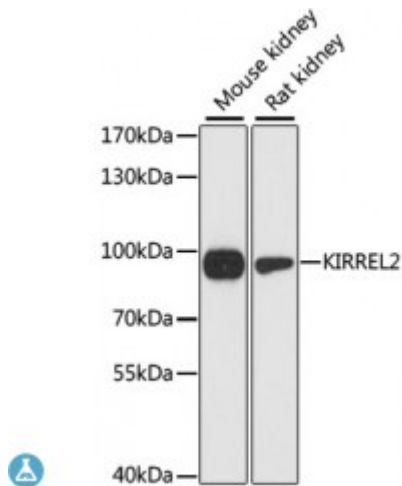


Anti-KIRREL2 Antibody



Description

This gene encodes a type I transmembrane protein and member of the immunoglobulin superfamily of cell adhesion molecules. The encoded protein localizes to adherens junctions in pancreatic beta cells and regulates insulin secretion. Autoantibodies against the encoded protein have been detected in serum from patients with type 1 diabetes. This gene may also play a role in glomerular development and decreased expression of this gene has been observed in human glomerular diseases. This gene and the related opposite-strand gene nephrin (GeneID: 527362) are regulated by a bidirectional promoter.

Model	STJ115096
Host	Rabbit
Reactivity	Human, Mouse, Rat
Applications	WB
Immunogen	Recombinant fusion protein containing a sequence corresponding to amino acids 21-220 of human KIRREL2 (NP_954649.3).
Gene ID	84063
Gene Symbol	KIRREL2
Dilution range	WB 1:1000 - 1:2000
Tissue Specificity	Highly expressed in beta-cells of the pancreatic islets
Purification	Affinity purification
Note	For Research Use Only (RUO).
Protein Name	Kin of IRRE-like protein 2 Kin of irregular chiasm-like protein 2 Nephrin-like

	protein 3
Molecular Weight	75.092 kDa
Clonality	Polyclonal
Conjugation	Unconjugated
Isotype	IgG
Formulation	PBS with 0.02% sodium azide, 50% glycerol, pH7.3.
Storage Instruction	Store at -20C. Avoid freeze / thaw cycles.
Database Links	HGNC:18816OMIM:607762Reactome:R-HSA-373753
Alternative Names	Kin of IRRE-like protein 2 Kin of irregular chiasm-like protein 2 Nephrin-like protein 3
Cellular Localization	Cell membrane

St John's Laboratory Ltd

F +44 (0)207 681 2580
T +44 (0)208 223 3081

W <http://www.stjohnslabs.com/>
E info@stjohnslabs.com