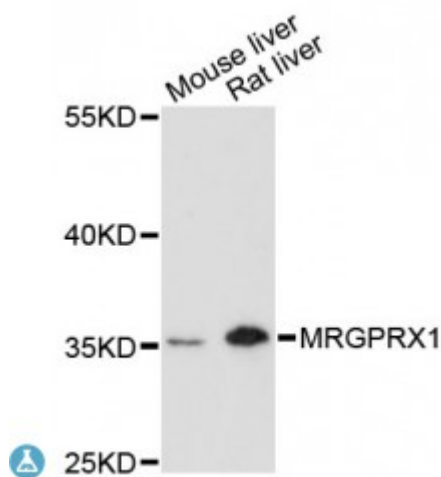


Anti-MRGPRX1 Antibody



Model	STJ115108
Host	Rabbit
Reactivity	Mouse, Rat
Applications	WB
Immunogen	Recombinant fusion protein containing a sequence corresponding to amino acids 263-322 of human MRGPRX1 (NP_671732.3).
Gene ID	259249
Gene Symbol	MRGPRX1
Dilution range	WB 1:500 - 1:2000
Tissue Specificity	Uniquely localized in a subset of small dorsal root and trigeminal sensory neurons
Purification	Affinity purification
Note	For Research Use Only (RUO).
Protein Name	Mas-related G-protein coupled receptor member X1 Sensory neuron-specific G-protein coupled receptor 3/4
Molecular Weight	36.25 kDa
Clonality	Polyclonal
Conjugation	Unconjugated
Isotype	IgG
Formulation	PBS with 0.02% sodium azide, 50% glycerol, pH7.3.
Storage Instruction	Store at -20C. Avoid freeze / thaw cycles.

Database Links	HGNC:17962OMIM:607227
Alternative Names	Mas-related G-protein coupled receptor member X1 Sensory neuron-specific G-protein coupled receptor 3/4
Function	Orphan receptor, Probably involved in the function of nociceptive neurons, May regulate nociceptor function and/or development, including the sensation or modulation of pain, Potently activated by enkephalins including BAM22 (bovine adrenal medulla peptide 22) and BAM (8-22)q proteins are involved in the calcium-signaling pathway, Activated by the antimalarial drug, chloroquine, May mediate chloroquine-induced itch, in a histamine-independent manner,
Cellular Localization	Cell membrane

St John's Laboratory Ltd

F +44 (0)207 681 2580

T +44 (0)208 223 3081

W <http://www.stjohnslabs.com/>

E info@stjohnslabs.com