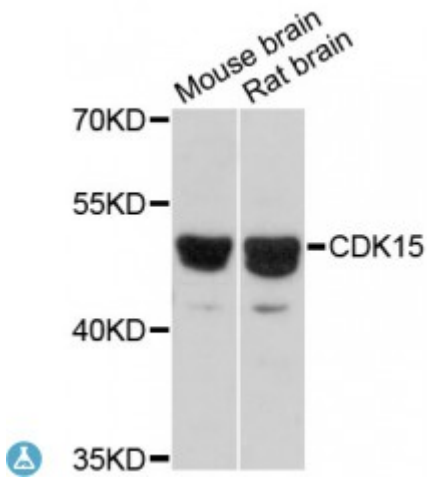


Anti-CDK15 Antibody



Model	STJ115129
Host	Rabbit
Reactivity	Mouse, Rat
Applications	WB
Immunogen	Recombinant fusion protein containing a sequence corresponding to amino acids 271-400 of human CDK15 (NP_001248365.1).
Gene ID	65061
Gene Symbol	CDK15
Dilution range	WB 1:500 - 1:2000
Purification	Affinity purification
Note	For Research Use Only (RUO).
Protein Name	Cyclin-dependent kinase 15
Molecular Weight	49.023 kDa
Clonality	Polyclonal
Conjugation	Unconjugated
Isotype	IgG
Formulation	PBS with 0.02% sodium azide, 50% glycerol, pH7.3.
Storage Instruction	Store at -20C. Avoid freeze / thaw cycles.
Database Links	HGNC:14434OMIM:616147
Alternative Names	Cyclin-dependent kinase 15

Function

Serine/threonine-protein kinase that acts like an antiapoptotic protein that counters TRAIL/TNFSF10-induced apoptosis by inducing phosphorylation of BIRC5 at 'Thr-34',

St John's Laboratory Ltd**F** +44 (0)207 681 2580**T** +44 (0)208 223 3081**W** <http://www.stjohnslabs.com/>**E** info@stjohnslabs.com