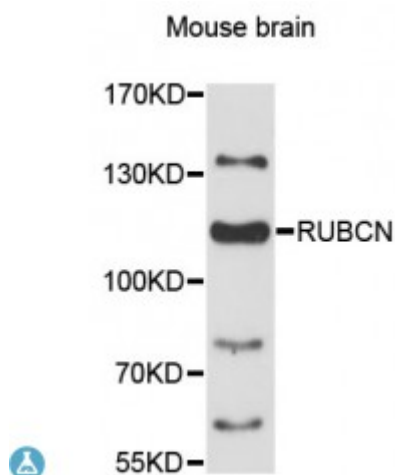


Anti-RUBCN Antibody



Description

The protein encoded by this gene is a negative regulator of autophagy and endocytic trafficking and controls endosome maturation. This protein contains two conserved domains, an N-terminal RUN domain and a C-terminal DUF4206 domain. The RUN domain is involved in Ras-like GTPase signaling, and the DUF4206 domain contains a diacylglycerol (DAG) binding-like motif. Mutation in this gene results in deletion of the DAG binding-like motif and causes a recessive ataxia. Alternatively spliced transcript variants encoding distinct isoforms have been found for this gene.

Model	STJ115135
Host	Rabbit
Reactivity	Mouse
Applications	WB
Immunogen	Recombinant fusion protein containing a sequence corresponding to amino acids 1-200 of human RUBCN (NP_055502.1).
Gene ID	9711
Gene Symbol	RUBCN
Dilution range	WB 1:500 - 1:2000
Purification	Affinity purification
Note	For Research Use Only (RUO).
Protein Name	Run domain Beclin-1-interacting and cysteine-rich domain-containing protein Rubicon Beclin-1 associated RUN domain containing protein Baron

Molecular Weight	108.622 kDa
Clonality	Polyclonal
Conjugation	Unconjugated
Isotype	IgG
Formulation	PBS with 0.02% sodium azide, 50% glycerol, pH7.3.
Storage Instruction	Store at -20C. Avoid freeze / thaw cycles.
Database Links	HGNC:28991OMIM:613516
Alternative Names	Run domain Beclin-1-interacting and cysteine-rich domain-containing protein Rubicon Beclin-1 associated RUN domain containing protein Baron
Function	Inhibits PIK3C3 activity
Cellular Localization	Late endosome,

St John's Laboratory Ltd

F +44 (0)207 681 2580

T +44 (0)208 223 3081

W <http://www.stjohnslabs.com/>

E info@stjohnslabs.com