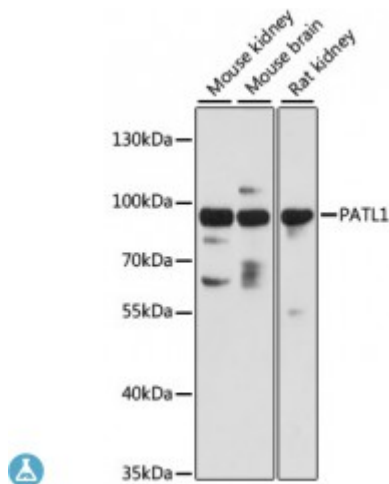


Anti-PATL1 Antibody



Model	STJ115136
Host	Rabbit
Reactivity	Mouse, Rat
Applications	WB
Immunogen	Recombinant fusion protein containing a sequence corresponding to amino acids 535-640 of human PATL1 (NP_689929.2).
Gene ID	219988
Gene Symbol	PATL1
Dilution range	WB 1:1000 - 1:2000
Tissue Specificity	Ubiquitous
Purification	Affinity purification
Note	For Research Use Only (RUO).
Protein Name	Protein PAT1 homolog 1 PAT1-like protein 1 Protein PAT1 homolog b Pat1b hPat1b
Molecular Weight	86.85 kDa
Clonality	Polyclonal
Conjugation	Unconjugated
Isotype	IgG
Formulation	PBS with 0.02% sodium azide, 50% glycerol, pH7.3.
Storage Instruction	Store at -20C. Avoid freeze / thaw cycles.
Database Links	HGNC:26721 OMIM:614660 Reactome:R-HSA-430039

Alternative Names	Protein PAT1 homolog 1 PAT1-like protein 1 Protein PAT1 homolog b Pat1b hPat1b
Function	RNA-binding protein involved in deadenylation-dependent decapping of mRNAs, leading to the degradation of mRNAs, Acts as a scaffold protein that connects deadenylation and decapping machinery, Required for cytoplasmic mRNA processing body (P-body) assembly, In case of infection, required for translation and replication of hepatitis C virus (HCV),
Cellular Localization	Cytoplasm, P-body, Nucleus, Nucleus, PML body, Nucleus speckle,

St John's Laboratory Ltd

F +44 (0)207 681 2580

T +44 (0)208 223 3081

W <http://www.stjohnslabs.com/>

E info@stjohnslabs.com