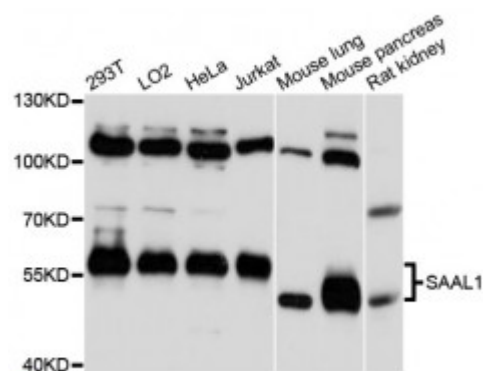


Anti-SAAL1 Antibody



Model	STJ115149
Host	Rabbit
Reactivity	Human, Mouse, Rat
Applications	WB
Immunogen	Recombinant fusion protein containing a sequence corresponding to amino acids 175-474 of human SAAL1 (NP_612430.2).
Gene ID	113174
Gene Symbol	SAAL1
Dilution range	WB 1:500 - 1:2000
Tissue Specificity	Highly expressed in testis and ovary, and to a lesser extent in the lung, spleen and the heart (at protein level)
Purification	Affinity purification
Note	For Research Use Only (RUO).
Protein Name	Protein SAAL1 Synoviocyte proliferation-associated in collagen-induced arthritis protein 1 SPACIA1
Molecular Weight	53.558 kDa
Clonality	Polyclonal
Conjugation	Unconjugated
Isotype	IgG
Formulation	PBS with 0.02% sodium azide, 50% glycerol, pH7.3.
Storage Instruction	Store at -20C. Avoid freeze / thaw cycles.

Database Links	HGNC:25158
Alternative Names	Protein SAAL1 Synoviocyte proliferation-associated in collagen-induced arthritis protein 1 SPACIA1
Function	Plays a role in promoting the proliferation of synovial fibroblasts in response to proinflammatory stimuli,
Cellular Localization	Nucleus

St John's Laboratory Ltd

F +44 (0)207 681 2580

T +44 (0)208 223 3081

W <http://www.stjohnslabs.com/>

E info@stjohnslabs.com