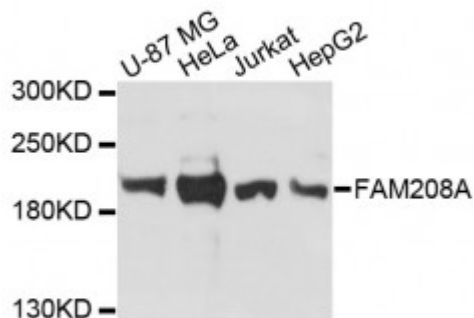


Anti-FAM208A Antibody



Model	STJ115153
Host	Rabbit
Reactivity	Human
Applications	WB
Immunogen	Recombinant fusion protein containing a sequence corresponding to amino acids 700-1000 of human FAM208A (NP_001106207.1).
Gene ID	23272
Gene Symbol	FAM208A
Dilution range	WB 1:500 - 1:2000
Purification	Affinity purification
Note	For Research Use Only (RUO).
Protein Name	Protein TASOR CTCL tumor antigen se89-1 Retinoblastoma-associated protein RAP140 Transgene activation suppressor protein
Molecular Weight	189.032 kDa
Clonality	Polyclonal
Conjugation	Unconjugated
Isotype	IgG
Formulation	PBS with 0.02% sodium azide, 50% glycerol, pH7.3.
Storage Instruction	Store at -20C. Avoid freeze / thaw cycles.
Database Links	HGNC:30314OMIM:616493
Alternative Names	Protein TASOR CTCL tumor antigen se89-1 Retinoblastoma-associated

protein RAP140 Transgene activation suppressor protein

Function

Component of the HUSH complex, a multiprotein complex that mediates epigenetic repression, The HUSH complex is recruited to genomic loci rich in H3K9me3 and is probably required to maintain transcriptional silencing by promoting recruitment of SETDB1, a histone methyltransferase that mediates further deposition of H3K9me3,

Cellular Localization

Nucleus

**Post-translational
Modifications**

Asn-1105 may be N-glycosylated

St John's Laboratory Ltd

F +44 (0)207 681 2580

T +44 (0)208 223 3081

W <http://www.stjohnslabs.com/>

E info@stjohnslabs.com