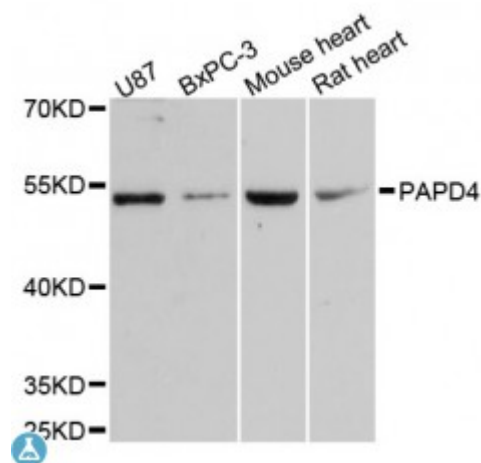


Anti-PAPD4 Antibody



Model	STJ115204
Host	Rabbit
Reactivity	Human, Mouse, Rat
Applications	WB
Immunogen	Recombinant fusion protein containing a sequence corresponding to amino acids 1-300 of human PAPD4 (NP_776158.2).
Gene ID	167153
Gene Symbol	PAPD4
Dilution range	WB 1:500 - 1:2000
Tissue Specificity	Expressed in brain, Within brain, it is expressed in cerebellum, hippocampus and medulla
Purification	Affinity purification
Note	For Research Use Only (RUO).
Protein Name	Poly(A RNA polymerase GLD2 hGLD-2
Molecular Weight	56.028 kDa
Clonality	Polyclonal
Conjugation	Unconjugated
Isotype	IgG
Formulation	PBS with 0.02% sodium azide, 50% glycerol, pH7.3.
Storage Instruction	Store at -20C. Avoid freeze / thaw cycles.
Database Links	HGNC:26776OMIM:614121

Alternative Names	Poly(A RNA polymerase GLD2 hGLD-2
Function	Cytoplasmic poly(A) RNA polymerase that adds successive AMP monomers to the 3'-end of specific RNAs, forming a poly(A) tail, In contrast to the canonical nuclear poly(A) RNA polymerase, it only adds poly(A) to selected cytoplasmic mRNAs, Does not play a role in replication-dependent histone mRNA degradation
Cellular Localization	Cytoplasm

St John's Laboratory Ltd

F +44 (0)207 681 2580

T +44 (0)208 223 3081

W <http://www.stjohnslabs.com/>

E info@stjohnslabs.com