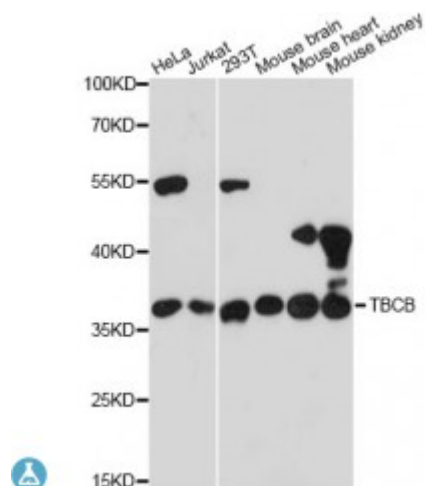


Anti-TBCB Antibody



Model	STJ115213
Host	Rabbit
Reactivity	Human, Mouse
Applications	WB
Immunogen	Recombinant fusion protein containing a sequence corresponding to amino acids 1-244 of human TBCB (NP_001272.2).
Gene ID	1155
Gene Symbol	TBCB
Dilution range	WB 1:1000 - 1:2000
Tissue Specificity	Found in most tissues
Purification	Affinity purification
Note	For Research Use Only (RUO).
Protein Name	Tubulin-folding cofactor B Cytoskeleton-associated protein 1 Cytoskeleton-associated protein CKAPI Tubulin-specific chaperone B
Molecular Weight	27.326 kDa
Clonality	Polyclonal
Conjugation	Unconjugated
Isotype	IgG
Formulation	PBS with 0.02% sodium azide, 50% glycerol, pH7.3.
Storage Instruction	Store at -20C. Avoid freeze / thaw cycles.
Database Links	HGNC:1989OMIM:601303Reactome:R-HSA-389977

Alternative Names	Tubulin-folding cofactor B Cytoskeleton-associated protein 1 Cytoskeleton-associated protein CKAPI Tubulin-specific chaperone B
Function	Binds to alpha-tubulin folding intermediates after their interaction with cytosolic chaperonin in the pathway leading from newly synthesized tubulin to properly folded heterodimer ,
Cellular Localization	Cytoplasm
Post-translational Modifications	Phosphorylation by PAK1 is required for normal function,

St John's Laboratory Ltd

F +44 (0)207 681 2580

T +44 (0)208 223 3081

W <http://www.stjohnslabs.com/>

E info@stjohnslabs.com