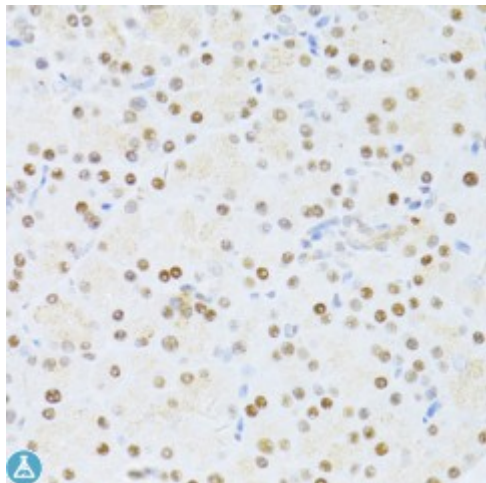


## Anti-ETV1 Antibody



### Description

This gene encodes a member of the ETS (E twenty-six) family of transcription factors. The ETS proteins regulate many target genes that modulate biological processes like cell growth, angiogenesis, migration, proliferation and differentiation. All ETS proteins contain an ETS DNA-binding domain that binds to DNA sequences containing the consensus 5'-CGGA[AT]-3'. The protein encoded by this gene contains a conserved short acidic transactivation domain (TAD) in the N-terminal region, in addition to the ETS DNA-binding domain in the C-terminal region. This gene is involved in chromosomal translocations, which result in multiple fusion proteins including EWS-ETV1 in Ewing sarcoma and at least 10 ETV1 partners (see PMID: 19657377, Table 1) in prostate cancer. In addition to chromosomal rearrangement, this gene is overexpressed in prostate cancer, melanoma and gastrointestinal stromal tumor. Multiple alternatively spliced transcript variants encoding different isoforms have been identified.

<b>Model</b>	STJ115267
<b>Host</b>	Rabbit
<b>Reactivity</b>	Human, Mouse, Rat
<b>Applications</b>	IF, IHC
<b>Immunogen</b>	Recombinant fusion protein containing a sequence corresponding to amino acids 80-300 of human ETV1 (NP_004947.2).
<b>Gene ID</b>	<a href="#">2115</a>
<b>Gene Symbol</b>	<a href="#">ETV1</a>
<b>Dilution range</b>	IHC 1:50 - 1:200

IF 1:50 - 1:200

<b>Tissue Specificity</b>	Very highly expressed in brain, highly expressed in testis, lung and heart, moderately in spleen, small intestine, pancreas and colon, weakly in liver, prostate and thymus, very weakly in skeletal muscle, kidney and ovary and not in placenta and peripheral blood leukocytes
<b>Purification</b>	Affinity purification
<b>Note</b>	For Research Use Only (RUO).
<b>Protein Name</b>	ETS translocation variant 1 Ets-related protein 81
<b>Molecular Weight</b>	55.131 kDa
<b>Clonality</b>	Polyclonal
<b>Conjugation</b>	Unconjugated
<b>Isotype</b>	IgG
<b>Formulation</b>	PBS with 0.02% sodium azide, 50% glycerol, pH7.3.
<b>Storage Instruction</b>	Store at -20C. Avoid freeze / thaw cycles.
<b>Database Links</b>	<a href="#">HGNC:34900MIM:600541</a>
<b>Alternative Names</b>	ETS translocation variant 1 Ets-related protein 81
<b>Function</b>	Transcriptional activator that binds to DNA sequences containing the consensus pentanucleotide 5'-CGGA[AT]-3'
<b>Cellular Localization</b>	Nucleus
<b>Post-translational Modifications</b>	Sumoylated,