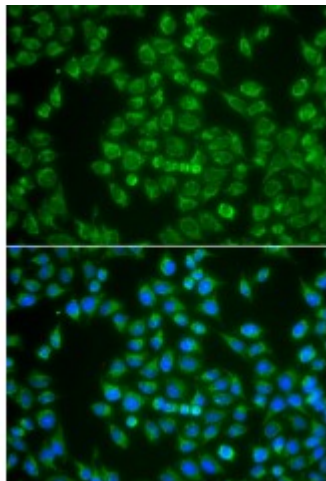


## Anti-MAP4K3 Antibody



### Description

This gene encodes a member of the mitogen-activated protein kinase kinase kinase family. The encoded protein activates key effectors in cell signalling, among them c-Jun. Alternatively spliced transcripts encoding multiple isoforms have been observed for this gene.

<b>Model</b>	STJ115337
<b>Host</b>	Rabbit
<b>Reactivity</b>	Human
<b>Applications</b>	IF
<b>Immunogen</b>	Recombinant fusion protein containing a sequence corresponding to amino acids 755-894 of human MAP4K3 (NP_003609.2).
<b>Gene ID</b>	<a href="#">8491</a>
<b>Gene Symbol</b>	<a href="#">MAP4K3</a>
<b>Dilution range</b>	IF 1:50 - 1:200
<b>Tissue Specificity</b>	Ubiquitously expressed in all tissues examined, with high levels in heart, brain, placenta, skeletal muscle, kidney and pancreas and lower levels in lung and liver
<b>Purification</b>	Affinity purification
<b>Note</b>	For Research Use Only (RUO).
<b>Protein Name</b>	Mitogen-activated protein kinase kinase kinase kinase 3
<b>Molecular Weight</b>	101.316 kDa
<b>Clonality</b>	Polyclonal

<b>Conjugation</b>	Unconjugated
<b>Isotype</b>	IgG
<b>Formulation</b>	PBS with 0.02% sodium azide, 50% glycerol, pH7.3.
<b>Storage Instruction</b>	Store at -20C. Avoid freeze / thaw cycles.
<b>Database Links</b>	<a href="#">HGNC:6865OMIM:604921</a>
<b>Alternative Names</b>	Mitogen-activated protein kinase kinase kinase 3
<b>Function</b>	May play a role in the response to environmental stress, Appears to act upstream of the JUN N-terminal pathway,

---

**St John's Laboratory Ltd**

**F** +44 (0)207 681 2580

**T** +44 (0)208 223 3081

**W** <http://www.stjohnslabs.com/>

**E** [info@stjohnslabs.com](mailto:info@stjohnslabs.com)