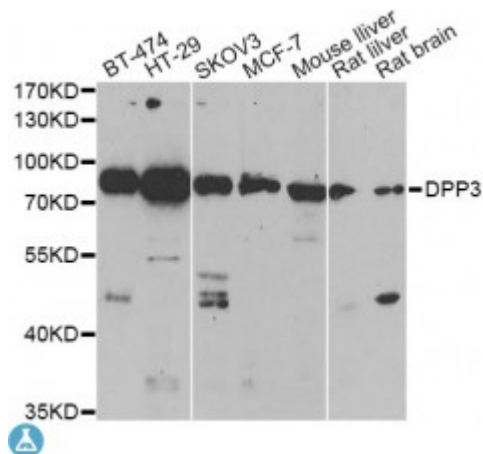


Anti-DPP3 Antibody



Description

This gene encodes a protein that is a member of the M49 family of metallopeptidases. This cytoplasmic protein binds a single zinc ion with its zinc-binding motif (HELLGH) and has post-proline dipeptidyl aminopeptidase activity, cleaving Xaa-Pro dipeptides from the N-termini of proteins. Increased activity of this protein is associated with endometrial and ovarian cancers. Alternatively spliced transcript variants have been found for this gene.

Model	STJ115352
Host	Rabbit
Reactivity	Human, Mouse, Rat
Applications	IHC, WB
Immunogen	Recombinant fusion protein containing a sequence corresponding to amino acids 1-280 of human DPP3 (NP_569710.2).
Gene ID	10072
Gene Symbol	DPP3
Dilution range	WB 1:500 - 1:2000 IHC 1:50 - 1:200
Tissue Specificity	Detected in placenta (at protein level)
Purification	Affinity purification
Note	For Research Use Only (RUO).
Protein Name	Dipeptidyl peptidase 3

Molecular Weight	82.589 kDa
Clonality	Polyclonal
Conjugation	Unconjugated
Isotype	IgG
Formulation	PBS with 0.02% sodium azide, 50% glycerol, pH7.3.
Storage Instruction	Store at -20C. Avoid freeze / thaw cycles.
Database Links	HGNC:3008OMIM:606818
Alternative Names	Dipeptidyl peptidase 3
Function	Cleaves and degrades bioactive peptides, including angiotensin, Leu-enkephalin and Met-enkephalin ,
Cellular Localization	Cytoplasm, cytosol

St John's Laboratory Ltd

F +44 (0)207 681 2580

T +44 (0)208 223 3081

W <http://www.stjohnslabs.com/>

E info@stjohnslabs.com