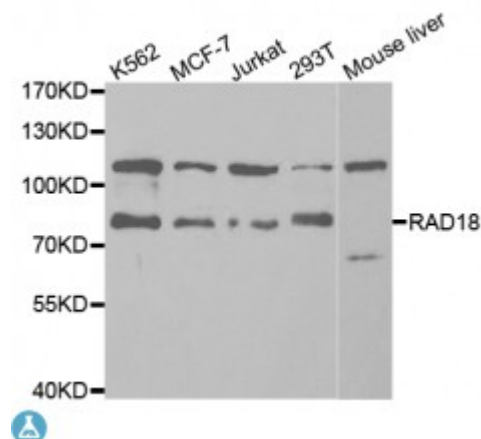


Anti-RAD18 Antibody



Description

The protein encoded by this gene is highly similar to *S. cerevisiae* DNA damage repair protein Rad18. Yeast Rad18 functions through its interaction with Rad6, which is an ubiquitin-conjugating enzyme required for post-replication repair of damaged DNA. Similar to its yeast counterpart, this protein is able to interact with the human homolog of yeast Rad6 protein through a conserved ring-finger motif. Mutation of this motif results in defective replication of UV-damaged DNA and hypersensitivity to multiple mutagens.

Model	STJ115395
Host	Rabbit
Reactivity	Human, Mouse, Rat
Applications	IF, IHC, WB
Immunogen	Recombinant fusion protein containing a sequence corresponding to amino acids 216-495 of human RAD18 (NP_064550.3).
Gene ID	56852
Gene Symbol	RAD18
Dilution range	WB 1:500 - 1:2000 IHC 1:50 - 1:200 IF 1:50 - 1:200
Purification	Affinity purification
Note	For Research Use Only (RUO).
Protein Name	E3 ubiquitin-protein ligase RAD18

Molecular Weight	56.223 kDa
Clonality	Polyclonal
Conjugation	Unconjugated
Isotype	IgG
Formulation	PBS with 0.02% sodium azide, 50% glycerol, pH7.3.
Storage Instruction	Store at -20C. Avoid freeze / thaw cycles.
Database Links	HGNC:18278OMIM:605256Reactome:R-HSA-110314
Alternative Names	E3 ubiquitin-protein ligase RAD18
Function	E3 ubiquitin-protein ligase involved in postreplication repair of UV-damaged DNA, Postreplication repair functions in gap-filling of a daughter strand on replication of damaged DNA, Associates to the E2 ubiquitin conjugating enzyme UBE2B to form the UBE2B-RAD18 ubiquitin ligase complex involved in mono-ubiquitination of DNA-associated PCNA on 'Lys-164', Has ssDNA binding activity,
Cellular Localization	Nucleus,

St John's Laboratory Ltd

F +44 (0)207 681 2580
T +44 (0)208 223 3081

W <http://www.stjohnslabs.com/>
E info@stjohnslabs.com