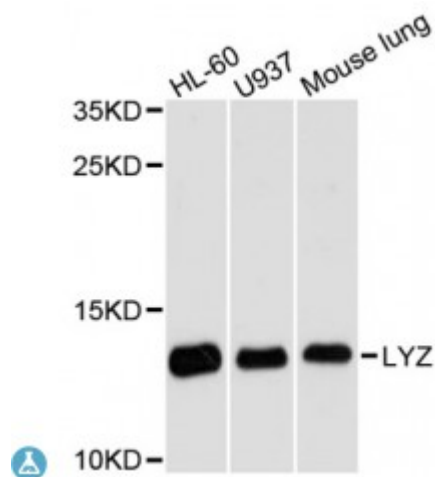


Anti-LYZ Antibody



Description

This gene encodes human lysozyme, whose natural substrate is the bacterial cell wall peptidoglycan (cleaving the beta[1-4]glycosidic linkages between N-acetylmuramic acid and N-acetylglucosamine). Lysozyme is one of the antimicrobial agents found in human milk, and is also present in spleen, lung, kidney, white blood cells, plasma, saliva, and tears. The protein has antibacterial activity against a number of bacterial species. Missense mutations in this gene have been identified in heritable renal amyloidosis.

Model	STJ115472
Host	Rabbit
Reactivity	Human, Mouse
Applications	WB
Immunogen	A synthetic peptide corresponding to a sequence within amino acids 1-100 of human LYZ (NP_000230.1).
Gene ID	4069
Gene Symbol	LYZ
Dilution range	WB 1:500 - 1:2000
Purification	Affinity purification
Note	For Research Use Only (RUO).
Protein Name	Lysozyme C
Molecular Weight	16.537 kDa

Clonality	Polyclonal
Conjugation	Unconjugated
Isotype	IgG
Formulation	PBS with 0.02% sodium azide, 50% glycerol, pH7.3.
Storage Instruction	Store at -20C. Avoid freeze / thaw cycles.
Database Links	HGNC:6740OMIM:105200Reactome:R-HSA-6798695
Alternative Names	Lysozyme C
Function	Lysozymes have primarily a bacteriolytic function
Cellular Localization	Secreted

St John's Laboratory Ltd

F +44 (0)207 681 2580

T +44 (0)208 223 3081

W <http://www.stjohnslabs.com/>

E info@stjohnslabs.com