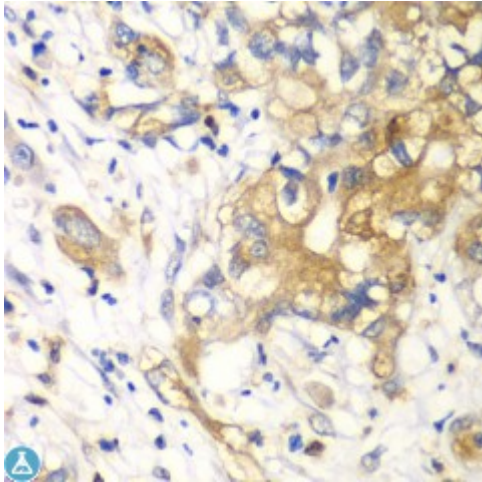


Anti-KLK10 Antibody



Description

Kallikreins are a subgroup of serine proteases having diverse physiological functions. Growing evidence suggests that many kallikreins are implicated in carcinogenesis and some have potential as novel cancer and other disease biomarkers. This gene is one of the fifteen kallikrein subfamily members located in a cluster on chromosome 19. Its encoded protein is secreted and may play a role in suppression of tumorigenesis in breast and prostate cancers. Alternate splicing of this gene results in multiple transcript variants encoding the same protein.

Model	STJ115588
Host	Rabbit
Reactivity	Human, Mouse, Rat
Applications	IF, IHC, WB
Immunogen	Recombinant fusion protein containing a sequence corresponding to amino acids 35-276 of human KLK10 (NP_001070968.1).
Gene ID	5655
Gene Symbol	KLK10
Dilution range	WB 1:500 - 1:2000 IHC 1:50 - 1:200 IF 1:50 - 1:200
Tissue Specificity	Expressed in breast, ovary and prostate
Purification	Affinity purification
Note	For Research Use Only (RUO).

Protein Name	Kallikrein-10
Molecular Weight	30.17 kDa
Clonality	Polyclonal
Conjugation	Unconjugated
Isotype	IgG
Formulation	PBS with 0.02% sodium azide, 50% glycerol, pH7.3.
Storage Instruction	Store at -20C. Avoid freeze / thaw cycles.
Database Links	HGNC:6358OMIM:602673
Alternative Names	Kallikrein-10
Function	Has a tumor-suppressor role for NES1 in breast and prostate cancer
Cellular Localization	Secreted

St John's Laboratory Ltd

F +44 (0)207 681 2580

T +44 (0)208 223 3081

W <http://www.stjohnslabs.com/>

E info@stjohnslabs.com