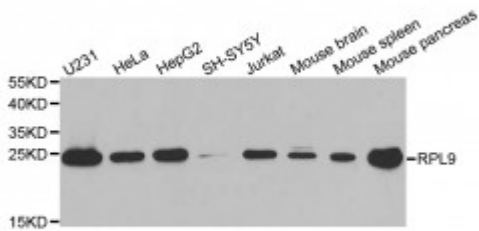


## Anti-RPL9 Antibody



### Description

Ribosomes, the organelles that catalyze protein synthesis, consist of a small 40S subunit and a large 60S subunit. Together these subunits are composed of 4 RNA species and approximately 80 structurally distinct proteins. This gene encodes a ribosomal protein that is a component of the 60S subunit. The protein belongs to the L6P family of ribosomal proteins. It is located in the cytoplasm. As is typical for genes encoding ribosomal proteins, there are multiple processed pseudogenes of this gene dispersed through the genome. Alternative splicing results in multiple transcript variants.

<b>Model</b>	STJ115591
<b>Host</b>	Rabbit
<b>Reactivity</b>	Human, Mouse, Rat
<b>Applications</b>	IF, IHC, WB
<b>Immunogen</b>	Recombinant fusion protein containing a sequence corresponding to amino acids 1-192 of human RPL9 (NP_000652.2).
<b>Gene ID</b>	<a href="#">6133</a>
<b>Gene Symbol</b>	<a href="#">RPL9</a>
<b>Dilution range</b>	WB 1:500 - 1:2000 IHC 1:50 - 1:200 IF 1:50 - 1:200
<b>Purification</b>	Affinity purification
<b>Note</b>	For Research Use Only (RUO).
<b>Protein Name</b>	60S ribosomal protein L9 Large ribosomal subunit protein uL6

<b>Molecular Weight</b>	21.863 kDa
<b>Clonality</b>	Polyclonal
<b>Conjugation</b>	Unconjugated
<b>Isotype</b>	IgG
<b>Formulation</b>	PBS with 0.02% sodium azide, 50% glycerol, pH7.3.
<b>Storage Instruction</b>	Store at -20C. Avoid freeze / thaw cycles.
<b>Database Links</b>	<a href="#">HGNC:10369OMIM:603686Reactome:R-HSA-156827</a>
<b>Alternative Names</b>	60S ribosomal protein L9 Large ribosomal subunit protein uL6

---

**St John's Laboratory Ltd**

**F** +44 (0)207 681 2580

**T** +44 (0)208 223 3081

**W** <http://www.stjohnslabs.com/>

**E** [info@stjohnslabs.com](mailto:info@stjohnslabs.com)