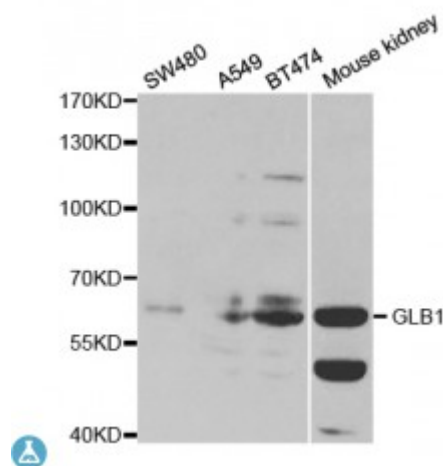


## Anti-GLB1 Antibody



### Description

This gene encodes a member of the glycosyl hydrolase 35 family of proteins. Alternative splicing results in multiple transcript variants, at least one of which encodes a preproprotein that is proteolytically processed to generate the mature lysosomal enzyme. This enzyme catalyzes the hydrolysis of a terminal beta-linked galactose residue from ganglioside substrates and other glycoconjugates. Mutations in this gene may result in GM1-gangliosidosis and Morquio B syndrome.

<b>Model</b>	STJ115624
<b>Host</b>	Rabbit
<b>Reactivity</b>	Human, Mouse, Rat
<b>Applications</b>	IHC, WB
<b>Immunogen</b>	Recombinant fusion protein containing a sequence corresponding to amino acids 1-270 of human GLB1 (NP_001073279.1).
<b>Gene ID</b>	<a href="#">2720</a>
<b>Gene Symbol</b>	<a href="#">GLB1</a>
<b>Dilution range</b>	WB 1:500 - 1:2000 IHC 1:50 - 1:200
<b>Purification</b>	Affinity purification
<b>Note</b>	For Research Use Only (RUO).
<b>Protein Name</b>	Beta-galactosidase
<b>Molecular Weight</b>	76.075 kDa

<b>Clonality</b>	Polyclonal
<b>Conjugation</b>	Unconjugated
<b>Isotype</b>	IgG
<b>Formulation</b>	PBS with 0.02% sodium azide, 50% glycerol, pH7.3.
<b>Storage Instruction</b>	Store at -20C. Avoid freeze / thaw cycles.
<b>Database Links</b>	<a href="#">HGNC:4298OMIM:230500Reactome:R-HSA-1660662</a>
<b>Alternative Names</b>	Beta-galactosidase
<b>Function</b>	Cleaves beta-linked terminal galactosyl residues from gangliosides, glycoproteins, and glycosaminoglycans
<b>Cellular Localization</b>	Lysosome,

---

**St John's Laboratory Ltd**

**F** +44 (0)207 681 2580

**T** +44 (0)208 223 3081

**W** <http://www.stjohnslabs.com/>

**E** [info@stjohnslabs.com](mailto:info@stjohnslabs.com)