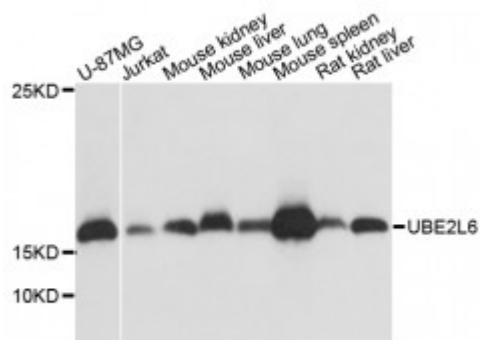


Anti-UBE2L6 Antibody



Description

The modification of proteins with ubiquitin is an important cellular mechanism for targeting abnormal or short-lived proteins for degradation. Ubiquitination involves at least three classes of enzymes: ubiquitin-activating enzymes (E1s), ubiquitin-conjugating enzymes (E2s) and ubiquitin-protein ligases (E3s). This gene encodes a member of the E2 ubiquitin-conjugating enzyme family. This enzyme is highly similar in primary structure to the enzyme encoded by the UBE2L3 gene. Two alternatively spliced transcript variants encoding distinct isoforms have been found for this gene.

Model	STJ115626
Host	Rabbit
Reactivity	Human, Mouse, Rat
Applications	WB
Immunogen	A synthetic peptide corresponding to a sequence within amino acids 50 to the C-terminus of human UBE2L6 (NP_004214.1).
Gene ID	9246
Gene Symbol	UBE2L6
Dilution range	WB 1:500 - 1:2000
Tissue Specificity	Present in natural killer cells (at protein level)
Purification	Affinity purification
Note	For Research Use Only (RUO).
Protein Name	Ubiquitin/ISG15-conjugating enzyme E2 L6

Molecular Weight	17.769 kDa
Clonality	Polyclonal
Conjugation	Unconjugated
Isotype	IgG
Formulation	PBS with 0.02% sodium azide, 50% glycerol, pH7.3.
Storage Instruction	Store at -20C. Avoid freeze / thaw cycles.
Database Links	HGNC:12490OMIM:603890Reactome:R-HSA-1169408
Alternative Names	Ubiquitin/ISG15-conjugating enzyme E2 L6
Function	Catalyzes the covalent attachment of ubiquitin or ISG15 to other proteins, Functions in the E6/E6-AP-induced ubiquitination of p53/TP53, Promotes ubiquitination and subsequent proteasomal degradation of FLT3,
Post-translational Modifications	ISGylated,

St John's Laboratory Ltd

F +44 (0)207 681 2580

T +44 (0)208 223 3081

W <http://www.stjohnslabs.com/>

E info@stjohnslabs.com