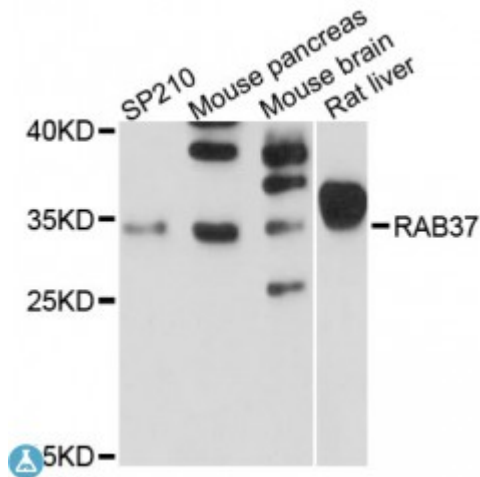


Anti-RAB37 Antibody



Model	STJ115659
Host	Rabbit
Reactivity	Human, Mouse, Rat
Applications	WB
Immunogen	Recombinant fusion protein containing a sequence corresponding to amino acids 144-223 of human RAB37 (NP_001006639.1).
Gene ID	326624
Gene Symbol	RAB37
Dilution range	WB 1:500 - 1:2000
Purification	Affinity purification
Note	For Research Use Only (RUO).
Protein Name	Ras-related protein Rab-37
Molecular Weight	24.815 kDa
Clonality	Polyclonal
Conjugation	Unconjugated
Isotype	IgG
Formulation	PBS with 0.02% sodium azide, 50% glycerol, pH7.3.
Storage Instruction	Store at -20C. Avoid freeze / thaw cycles.
Database Links	HGNC:30268 OMIM:609956 Reactome:R-HSA-6798695
Alternative Names	Ras-related protein Rab-37

Cellular Localization

Cytoplasmic vesicle,

St John's Laboratory Ltd

F +44 (0)207 681 2580

T +44 (0)208 223 3081

W <http://www.stjohnslabs.com/>

E info@stjohnslabs.com