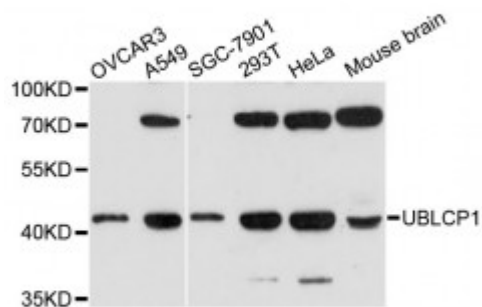


## Anti-UBLCP1 Antibody



<b>Model</b>	STJ115682
<b>Host</b>	Rabbit
<b>Reactivity</b>	Human, Mouse
<b>Applications</b>	WB
<b>Immunogen</b>	Recombinant fusion protein containing a sequence corresponding to amino acids 99-318 of human UBLCP1 (NP_659486.2).
<b>Gene ID</b>	<a href="#">134510</a>
<b>Gene Symbol</b>	<a href="#">UBLCP1</a>
<b>Dilution range</b>	WB 1:500 - 1:2000
<b>Tissue Specificity</b>	Broadly expressed, with highest levels in placenta, lung, testis and ovary, Up-regulated in tumor tissues
<b>Purification</b>	Affinity purification
<b>Note</b>	For Research Use Only (RUO).
<b>Protein Name</b>	Ubiquitin-like domain-containing CTD phosphatase 1
<b>Molecular Weight</b>	36.805 kDa
<b>Clonality</b>	Polyclonal
<b>Conjugation</b>	Unconjugated
<b>Isotype</b>	IgG
<b>Formulation</b>	PBS with 0.02% sodium azide, 50% glycerol, pH7.3.
<b>Storage Instruction</b>	Store at -20C. Avoid freeze / thaw cycles.
<b>Database Links</b>	<a href="#">HGNC:28110</a> <a href="#">MIM:609867</a>

<b>Alternative Names</b>	Ubiquitin-like domain-containing CTD phosphatase 1
<b>Function</b>	Dephosphorylates 26S nuclear proteasomes, thereby decreasing their proteolytic activity, The dephosphorylation may prevent assembly of the core and regulatory particles (CP and RP) into mature 26S proteasome,
<b>Cellular Localization</b>	Nucleus,

---

**St John's Laboratory Ltd**

**F** +44 (0)207 681 2580  
**T** +44 (0)208 223 3081

**W** <http://www.stjohnslabs.com/>  
**E** [info@stjohnslabs.com](mailto:info@stjohnslabs.com)