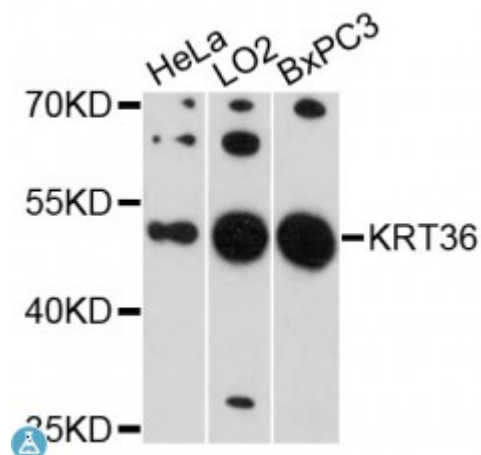


## Anti-KRT36 Antibody



### Description

The protein encoded by this gene is a member of the keratin gene family. This type I hair keratin is an acidic protein which heterodimerizes with type II keratins to form hair and nails. The type I hair keratins are clustered in a region of chromosome 17q12-q21 and have the same direction of transcription.

<b>Model</b>	STJ115707
<b>Host</b>	Rabbit
<b>Reactivity</b>	Human
<b>Applications</b>	WB
<b>Immunogen</b>	Recombinant fusion protein containing a sequence corresponding to amino acids 388-467 of human KRT36 (NP_003762.1).
<b>Gene ID</b>	<a href="#">8689</a>
<b>Gene Symbol</b>	<a href="#">KRT36</a>
<b>Dilution range</b>	WB 1:500 - 1:2000
<b>Tissue Specificity</b>	Expressed in the hair follicles
<b>Purification</b>	Affinity purification
<b>Note</b>	For Research Use Only (RUO).
<b>Protein Name</b>	Keratin type I cuticular Ha6 Hair keratin type I Ha6 Keratin-36 K36
<b>Molecular Weight</b>	52.247 kDa
<b>Clonality</b>	Polyclonal

<b>Conjugation</b>	Unconjugated
<b>Isotype</b>	IgG
<b>Formulation</b>	PBS with 0.02% sodium azide, 50% glycerol, pH7.3.
<b>Storage Instruction</b>	Store at -20C. Avoid freeze / thaw cycles.
<b>Database Links</b>	<a href="#">HGNC:6454</a> <a href="#">OMIM:604540</a> <a href="#">Reactome:R-HSA-6805567</a>
<b>Alternative Names</b>	Keratin type I cuticular Ha6 Hair keratin type I Ha6 Keratin-36 K36

---

**St John's Laboratory Ltd**

**F** +44 (0)207 681 2580

**T** +44 (0)208 223 3081

**W** <http://www.stjohnslabs.com/>

**E** [info@stjohnslabs.com](mailto:info@stjohnslabs.com)