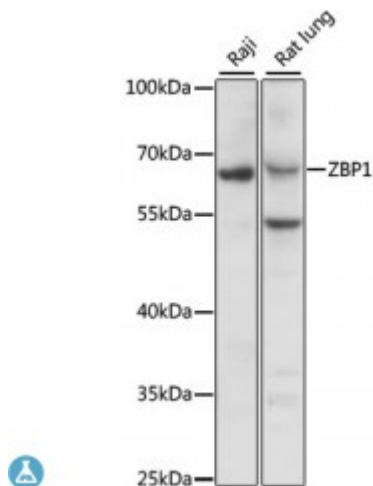


Anti-ZBP1 Antibody



Description

This gene encodes a Z-DNA binding protein. The encoded protein plays a role in the innate immune response by binding to foreign DNA and inducing type-I interferon production. Alternatively spliced transcript variants encoding multiple isoforms have been observed for this gene.

Model	STJ115838
Host	Rabbit
Reactivity	Human, Mouse, Rat
Applications	WB
Immunogen	Recombinant fusion protein containing a sequence corresponding to amino acids 1-200 of human ZBP1 (NP_110403.2).
Gene ID	81030
Gene Symbol	ZBP1
Dilution range	WB 1:500 - 1:2000
Tissue Specificity	Highly expressed in lymphatic tissues including lymph node, leukocytes, tonsil, bone marrow and spleen, Expressed to a lesser extent in thymus, lung and liver
Purification	Affinity purification
Note	For Research Use Only (RUO).
Protein Name	Z-DNA-binding protein 1 Tumor stroma and activated macrophage protein DLM-1
Molecular Weight	46.343 kDa

Clonality	Polyclonal
Conjugation	Unconjugated
Isotype	IgG
Formulation	PBS with 0.02% sodium azide, 50% glycerol, pH7.3.
Storage Instruction	Store at -20C. Avoid freeze / thaw cycles.
Database Links	HGNC:16176 OMIM:606750 Reactome:R-HSA-1606322
Alternative Names	Z-DNA-binding protein 1 Tumor stroma and activated macrophage protein DLM-1
Function	Participates in the detection by the host's innate immune system of DNA from viral, bacterial or even host origin, Plays a role in host defense against tumors and pathogens, Acts as a cytoplasmic DNA sensor which, when activated, induces the recruitment of TBK1 and IRF3 to its C-terminal region and activates the downstream interferon regulatory factor (IRF) and NF-kappa B transcription factors, leading to type-I interferon production, ZBP1-induced NF-kappaB activation probably involves the recruitment of the RHIM containing kinases RIPK1 and RIPK3 ,

St John's Laboratory Ltd

F +44 (0)207 681 2580

T +44 (0)208 223 3081

W <http://www.stjohnslabs.com/>

E info@stjohnslabs.com