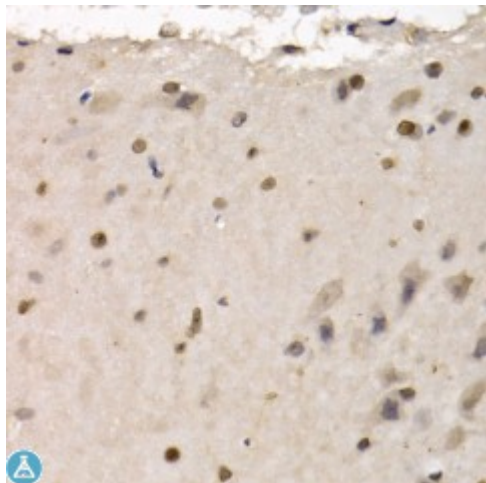


## Anti-RAD1 Antibody



### Description

This gene encodes a component of a heterotrimeric cell cycle checkpoint complex, known as the 9-1-1 complex, that is activated to stop cell cycle progression in response to DNA damage or incomplete DNA replication. The 9-1-1 complex is recruited by RAD17 to affected sites where it may attract specialized DNA polymerases and other DNA repair effectors. Alternatively spliced transcript variants of this gene have been described.

<b>Model</b>	STJ116309
<b>Host</b>	Rabbit
<b>Reactivity</b>	Human, Mouse, Rat
<b>Applications</b>	IF, IHC
<b>Immunogen</b>	Recombinant fusion protein containing a sequence corresponding to amino acids 1-282 of human RAD1 (NP_002844.1).
<b>Gene ID</b>	<a href="#">5810</a>
<b>Gene Symbol</b>	<a href="#">RAD1</a>
<b>Dilution range</b>	IHC 1:20 - 1:200 IF 1:50 - 1:200
<b>Tissue Specificity</b>	Expressed in testis, uterus, bladder, spleen, ovaries, lung, brain and muscle (at protein level)
<b>Purification</b>	Affinity purification
<b>Note</b>	For Research Use Only (RUO).
<b>Protein Name</b>	Cell cycle checkpoint protein RAD1 hRAD1

<b>Molecular Weight</b>	31.827 kDa
<b>Clonality</b>	Polyclonal
<b>Conjugation</b>	Unconjugated
<b>Isotype</b>	IgG
<b>Formulation</b>	PBS with 0.02% sodium azide, 50% glycerol, pH7.3.
<b>Storage Instruction</b>	Store at -20C. Avoid freeze / thaw cycles.
<b>Database Links</b>	<a href="#">HGNC:9806</a> <a href="#">OMIM:603153</a> <a href="#">Reactome:R-HSA-176187</a>
<b>Alternative Names</b>	Cell cycle checkpoint protein RAD1 hRAD1
<b>Function</b>	Component of the 9-1-1 cell-cycle checkpoint response complex that plays a major role in DNA repair ,
<b>Cellular Localization</b>	Nucleus

---

**St John's Laboratory Ltd**

**F** +44 (0)207 681 2580

**T** +44 (0)208 223 3081

**W** <http://www.stjohnslabs.com/>

**E** [info@stjohnslabs.com](mailto:info@stjohnslabs.com)