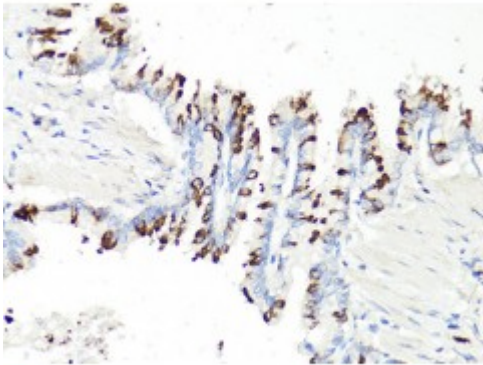


Anti-PDCD1 Antibody



Description

This gene encodes a cell surface membrane protein of the immunoglobulin superfamily. This protein is expressed in pro-B-cells and is thought to play a role in their differentiation. In mice, expression of this gene is induced in the thymus when anti-CD3 antibodies are injected and large numbers of thymocytes undergo apoptosis. Mice deficient for this gene bred on a BALB/c background developed dilated cardiomyopathy and died from congestive heart failure. These studies suggest that this gene product may also be important in T cell function and contribute to the prevention of autoimmune diseases.

Model	STJ116416
Host	Rabbit
Reactivity	Human, Mouse, Rat
Applications	IF, IHC, WB
Immunogen	A synthetic peptide corresponding to a sequence within amino acids 1-100 of human PDCD1 (NP_005009.2).
Gene ID	5133
Gene Symbol	PDCD1
Dilution range	WB 1:500 - 1:2000 IHC 1:50 - 1:200 IF 1:50 - 1:200
Purification	Affinity purification
Note	For Research Use Only (RUO).
Protein Name	Programmed cell death protein 1 Protein PD-1 hPD-1 CD antigen CD279

Molecular Weight	31.647 kDa
Clonality	Polyclonal
Conjugation	Unconjugated
Isotype	IgG
Formulation	PBS with 0.02% sodium azide, 50% glycerol, pH7.3.
Storage Instruction	Store at -20C. Avoid freeze / thaw cycles.
Database Links	HGNC:8760MIM:109100Reactome:R-HSA-389948
Alternative Names	Programmed cell death protein 1 Protein PD-1 hPD-1 CD antigen CD279
Function	Inhibitory cell surface receptor involved in the regulation of T-cell function during immunity and tolerance, Upon ligand binding, inhibits T-cell effector functions in an antigen-specific manner, Possible cell death inducer, in association with other factors,
Cellular Localization	Membrane

St John's Laboratory Ltd

F +44 (0)207 681 2580

T +44 (0)208 223 3081

W <http://www.stjohnslabs.com/>

E info@stjohnslabs.com