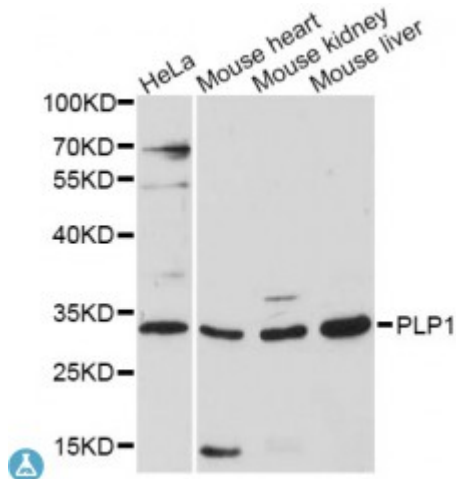


Anti-PLP1 Antibody



Description

This gene encodes a transmembrane proteolipid protein that is the predominant component of myelin. The encoded protein may play a role in the compaction, stabilization, and maintenance of myelin sheaths, as well as in oligodendrocyte development and axonal survival. Mutations in this gene cause Pelizaeus-Merzbacher disease and spastic paraplegia type 2. Alternatively splicing results in multiple transcript variants, including the DM20 splice variant.

Model	STJ116464
Host	Rabbit
Reactivity	Human, Mouse
Applications	WB
Immunogen	Recombinant fusion protein containing a sequence corresponding to amino acids 145-210 of human PLP1 (NP_955772.1).
Gene ID	5354
Gene Symbol	PLP1
Dilution range	WB 1:500 - 1:2000
Purification	Affinity purification
Note	For Research Use Only (RUO).
Protein Name	Myelin proteolipid protein PLP Lipophilin
Molecular Weight	30.077 kDa
Clonality	Polyclonal

Conjugation	Unconjugated
Isotype	IgG
Formulation	PBS with 0.02% sodium azide, 50% glycerol, pH7.3.
Storage Instruction	Store at -20C. Avoid freeze / thaw cycles.
Database Links	HGNC:9086OMIM:300401
Alternative Names	Myelin proteolipid protein PLP Lipophilin
Function	This is the major myelin protein from the central nervous system, It plays an important role in the formation or maintenance of the multilamellar structure of myelin
Cellular Localization	Cell membrane

St John's Laboratory Ltd

F +44 (0)207 681 2580

T +44 (0)208 223 3081

W <http://www.stjohnslabs.com/>

E info@stjohnslabs.com