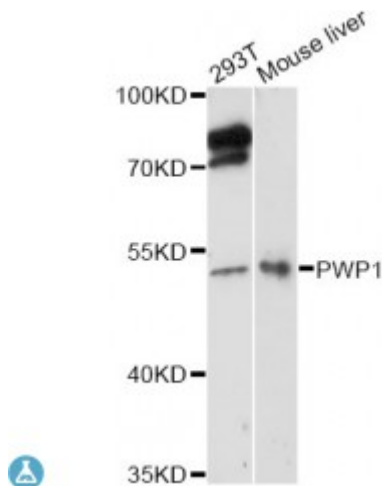


Anti-PWP1 Antibody



Description

The protein encoded by this gene contains several WD-40 repeats and is found mostly in the nucleus. The expression and localization of this protein are cell cycle dependent. Expression of this gene is upregulated in pancreatic adenocarcinoma. Three transcript variants encoding different isoforms have been found for this gene.

Model	STJ116485
Host	Rabbit
Reactivity	Human, Mouse, Rat
Applications	WB
Immunogen	Recombinant fusion protein containing a sequence corresponding to amino acids 1-120 of human PWP1 (NP_008993.1).
Gene ID	11137
Gene Symbol	PWP1
Dilution range	WB 1:500 - 1:2000
Tissue Specificity	High levels seen in the placenta, skeletal muscle, kidney and pancreas while lower levels were seen in the heart, brain and lung
Purification	Affinity purification
Note	For Research Use Only (RUO).
Protein Name	Periodic tryptophan protein 1 homolog Keratinocyte protein IEF SSP 9502
Molecular Weight	55.828 kDa
Clonality	Polyclonal

Conjugation	Unconjugated
Isotype	IgG
Formulation	PBS with 0.02% sodium azide, 50% glycerol, pH7.3.
Storage Instruction	Store at -20C. Avoid freeze / thaw cycles.
Database Links	HGNC:17015
Alternative Names	Periodic tryptophan protein 1 homolog Keratinocyte protein IEF SSP 9502
Function	May play an important role in cell growth and/or transcription
Cellular Localization	Nucleus

St John's Laboratory Ltd

F +44 (0)207 681 2580

T +44 (0)208 223 3081

W <http://www.stjohnslabs.com/>

E info@stjohnslabs.com