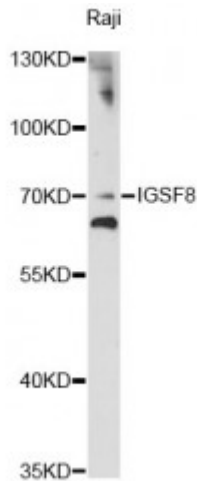


Anti-IGSF8 Antibody



Description

This gene encodes a member the EWI subfamily of the immunoglobulin protein superfamily. Members of this family contain a single transmembrane domain, an EWI (Glu-Trp-Ile)-motif and a variable number of immunoglobulin domains. This protein interacts with the tetraspanins CD81 and CD9 and may regulate their role in certain cellular functions including cell migration and viral infection. The encoded protein may also function as a tumor suppressor by inhibiting the proliferation of certain cancers. Alternate splicing results in multiple transcript variants that encode the same protein.

| | |
|---------------------------|--|
| Model | STJ116509 |
| Host | Rabbit |
| Reactivity | Human |
| Applications | WB |
| Immunogen | Recombinant fusion protein containing a sequence corresponding to amino acids 28-350 of human IGSF8 (NP_443100.1). |
| Gene ID | 93185 |
| Gene Symbol | IGSF8 |
| Dilution range | WB 1:500 - 1:2000 |
| Tissue Specificity | Expressed in brain, kidney, testis, liver and placenta with moderate expression in all other tissues, Detected on a majority of B-cells, T-cells, and natural killer cells but not on monocytes, polynuclear cells and platelets |
| Purification | Affinity purification |
| Note | For Research Use Only (RUO). |

| | |
|------------------------------|--|
| Protein Name | Immunoglobulin superfamily member 8 IgSF8 CD81 partner 3 Glu-Trp-Ile EWI motif-containing protein 2 EWI-2 Keratinocytes-associated transmembrane protein 4 KCT-4 LIR-D1 Prostaglandin regulatory-like protein < |
| Molecular Weight | 65.034 kDa |
| Clonality | Polyclonal |
| Conjugation | Unconjugated |
| Isotype | IgG |
| Formulation | PBS with 0.02% sodium azide, 50% glycerol, pH7.3. |
| Storage Instruction | Store at -20C. Avoid freeze / thaw cycles. |
| Database Links | HGNC:17813OMIM:606644 |
| Alternative Names | Immunoglobulin superfamily member 8 IgSF8 CD81 partner 3 Glu-Trp-Ile EWI motif-containing protein 2 EWI-2 Keratinocytes-associated transmembrane protein 4 KCT-4 LIR-D1 Prostaglandin regulatory-like protein < |
| Function | May play a key role in diverse functions ascribed to CD81 and CD9 such as oocytes fertilization or hepatitis C virus function, May regulate proliferation and differentiation of keratinocytes, May be a negative regulator of cell motility: suppresses T-cell mobility coordinately with CD81, associates with CD82 to suppress prostate cancer cell migration, regulates epidermoid cell reaggregation and motility on laminin-5 with CD9 and CD81 as key linkers, May also play a role on integrin-dependent morphology and motility functions, May participate in the regulation of neurite outgrowth and maintenance of the neural network in the adult brain, |
| Cellular Localization | Cell membrane |