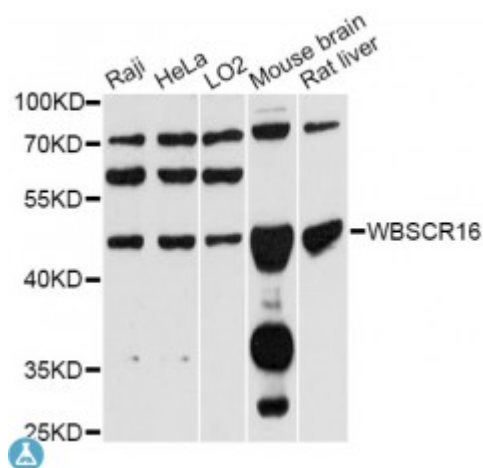


Anti-WBSCR16 Antibody



Description

This gene encodes a protein containing regulator of chromosome condensation 1-like repeats. The encoded protein may function as a guanine nucleotide exchange factor. This gene is located in a region of chromosome 7 that is deleted in Williams-Beuren syndrome, a multisystem developmental disorder. Alternative splicing results in multiple transcript variants.

| | |
|---------------------------|---|
| Model | STJ116542 |
| Host | Rabbit |
| Reactivity | Human, Mouse, Rat |
| Applications | WB |
| Immunogen | Recombinant fusion protein containing a sequence corresponding to amino acids 1-230 of human WBSCR16 (NP_110425.2). |
| Gene ID | 81554 |
| Gene Symbol | RCC1L |
| Dilution range | WB 1:500 - 1:2000 |
| Tissue Specificity | Ubiquitous |
| Purification | Affinity purification |
| Note | For Research Use Only (RUO). |
| Protein Name | RCC1-like G exchanging factor-like protein RCC1 like Williams-Beuren syndrome chromosomal region 16 protein |
| Molecular Weight | 49.997 kDa |

| | |
|----------------------------|---|
| Clonality | Polyclonal |
| Conjugation | Unconjugated |
| Isotype | IgG |
| Formulation | PBS with 0.02% sodium azide, 50% glycerol, pH7.3. |
| Storage Instruction | Store at -20C. Avoid freeze / thaw cycles. |
| Database Links | HGNC:14948OMIM:194050 |
| Alternative Names | RCC1-like G exchanging factor-like protein RCC1 like Williams-Beuren syndrome chromosomal region 16 protein |

St John's Laboratory Ltd

F +44 (0)207 681 2580

T +44 (0)208 223 3081

W <http://www.stjohnslabs.com/>

E info@stjohnslabs.com