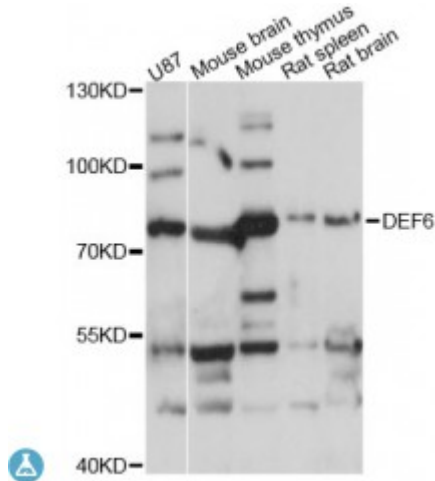


Anti-DEF6 Antibody



Model	STJ116549
Host	Rabbit
Reactivity	Human, Mouse, Rat
Applications	WB
Immunogen	Recombinant fusion protein containing a sequence corresponding to amino acids 60-330 of human DEF6 (NP_071330.3).
Gene ID	50619
Gene Symbol	DEF6
Dilution range	WB 1:500 - 1:2000
Tissue Specificity	Broadly expressed in the immune system and can be detected in T and B-cells
Purification	Affinity purification
Note	For Research Use Only (RUO).
Protein Name	Differentially expressed in FDCP 6 homolog DEF-6 IRF4-binding protein
Molecular Weight	73.91 kDa
Clonality	Polyclonal
Conjugation	Unconjugated
Isotype	IgG
Formulation	PBS with 0.02% sodium azide, 50% glycerol, pH7.3.
Storage Instruction	Store at -20C. Avoid freeze / thaw cycles.
Database Links	HGNC:27600MIM:610094

Alternative Names	Differentially expressed in FDCP 6 homolog DEF-6 IRF4-binding protein
Function	Phosphatidylinositol 3,4,5-trisphosphate-dependent guanine nucleotide exchange factor (GEF) which plays a role in the activation of Rho GTPases RAC1, RhoA and CDC42, Can regulate cell morphology in cooperation with activated RAC1, Plays a role in Th2 (T helper cells) development and/or activation, perhaps by interfering with ZAP70 signaling ,
Cellular Localization	Cytoplasm,
Post-translational Modifications	Tyrosine-phosphorylated by tyrosine-protein kinase LCK in response to T-cell activation,

St John's Laboratory Ltd

F +44 (0)207 681 2580

T +44 (0)208 223 3081

W <http://www.stjohnslabs.com/>

E info@stjohnslabs.com