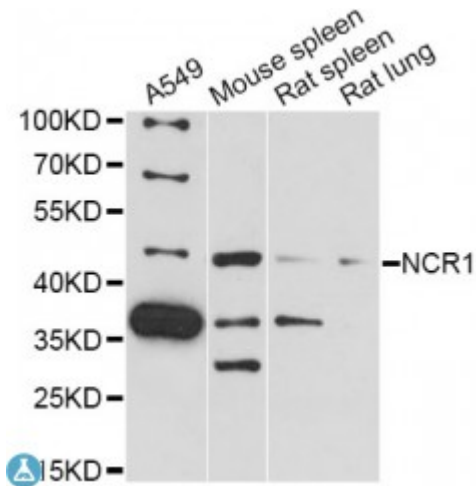


Anti-NCR1 Antibody



Model	STJ116710
Host	Rabbit
Reactivity	Human, Mouse, Rat
Applications	WB
Immunogen	Recombinant fusion protein containing a sequence corresponding to amino acids 151-303 of human NCR1 (NP_001138929.2).
Gene ID	9437
Gene Symbol	NCR1
Dilution range	WB 1:500 - 1:2000
Tissue Specificity	Selectively expressed by both resting and activated NK cells
Purification	Affinity purification
Note	For Research Use Only (RUO).
Protein Name	Natural cytotoxicity triggering receptor 1 Lymphocyte antigen 94 homolog NK cell-activating receptor Natural killer cell p46-related protein NK-p46 NKp46 hNKp46 CD antigen CD335
Molecular Weight	34.481 kDa
Clonality	Polyclonal
Conjugation	Unconjugated
Isotype	IgG
Formulation	PBS with 0.02% sodium azide, 50% glycerol, pH7.3.
Storage Instruction	Store at -20C. Avoid freeze / thaw cycles.

Database Links	HGNC:6731 OMIM:604530 Reactome:R-HSA-198933
Alternative Names	Natural cytotoxicity triggering receptor 1 Lymphocyte antigen 94 homolog NK cell-activating receptor Natural killer cell p46-related protein NK-p46 NKp46 hNKp46 CD antigen CD335
Function	Cytotoxicity-activating receptor that may contribute to the increased efficiency of activated natural killer (NK) cells to mediate tumor cell lysis,
Cellular Localization	Cell membrane
Post-translational Modifications	N-glycosylated,

St John's Laboratory Ltd

F +44 (0)207 681 2580

T +44 (0)208 223 3081

W <http://www.stjohnslabs.com/>

E info@stjohnslabs.com