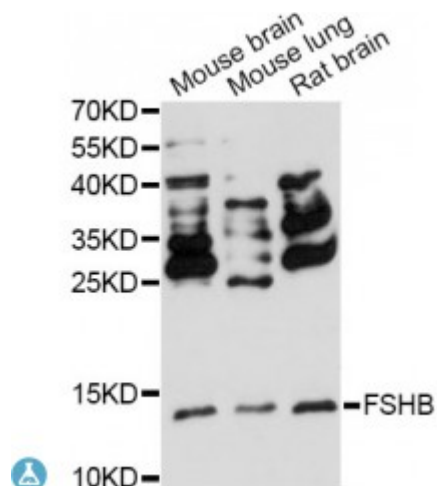


## Anti-FSHB Antibody



### Description

The pituitary glycoprotein hormone family includes follicle-stimulating hormone, luteinizing hormone, chorionic gonadotropin, and thyroid-stimulating hormone. All of these glycoproteins consist of an identical alpha subunit and a hormone-specific beta subunit. This gene encodes the beta subunit of follicle-stimulating hormone. In conjunction with luteinizing hormone, follicle-stimulating hormone induces egg and sperm production. Alternative splicing results in two transcript variants encoding the same protein.

<b>Model</b>	STJ116743
<b>Host</b>	Rabbit
<b>Reactivity</b>	Mouse, Rat
<b>Applications</b>	WB
<b>Immunogen</b>	Recombinant fusion protein containing a sequence corresponding to amino acids 19-129 of human FSHB (NP_000501.1).
<b>Gene ID</b>	<a href="#">2488</a>
<b>Gene Symbol</b>	<a href="#">FSHB</a>
<b>Dilution range</b>	WB 1:500 - 1:2000
<b>Purification</b>	Affinity purification
<b>Note</b>	For Research Use Only (RUO).
<b>Protein Name</b>	Follitropin subunit beta Follicle-stimulating hormone beta subunit FSH-B FSH-beta Follitropin beta chain
<b>Molecular Weight</b>	14.7 kDa

<b>Clonality</b>	Polyclonal
<b>Conjugation</b>	Unconjugated
<b>Isotype</b>	IgG
<b>Formulation</b>	PBS with 0.02% sodium azide, 50% glycerol, pH7.3.
<b>Storage Instruction</b>	Store at -20C. Avoid freeze / thaw cycles.
<b>Database Links</b>	<a href="#">HGNC:3964OMIM:136530Reactome:R-HSA-209822</a>
<b>Alternative Names</b>	Follitropin subunit beta Follicle-stimulating hormone beta subunit FSH-B FSH-beta Follitropin beta chain
<b>Function</b>	Stimulates development of follicle and spermatogenesis in the reproductive organs
<b>Cellular Localization</b>	Secreted

---

**St John's Laboratory Ltd**

**F** +44 (0)207 681 2580

**T** +44 (0)208 223 3081

**W** <http://www.stjohnslabs.com/>

**E** [info@stjohnslabs.com](mailto:info@stjohnslabs.com)