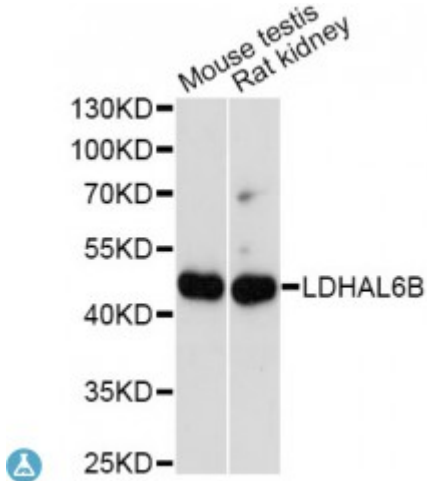


Anti-LDHAL6B Antibody



| | |
|----------------------------|--|
| Model | STJ117149 |
| Host | Rabbit |
| Reactivity | Mouse, Rat |
| Applications | WB |
| Immunogen | Recombinant fusion protein containing a sequence corresponding to amino acids 1-80 of human LDHAL6B (NP_149972.1). |
| Gene ID | 92483 |
| Gene Symbol | LDHAL6B |
| Dilution range | WB 1:500 - 1:2000 |
| Tissue Specificity | Testis specific |
| Purification | Affinity purification |
| Note | For Research Use Only (RUO). |
| Protein Name | L-lactate dehydrogenase A-like 6B |
| Molecular Weight | 41.943 kDa |
| Clonality | Polyclonal |
| Conjugation | Unconjugated |
| Isotype | IgG |
| Formulation | PBS with 0.02% sodium azide, 50% glycerol, pH7.3. |
| Storage Instruction | Store at -20C. Avoid freeze / thaw cycles. |
| Database Links | HGNC:21481 Reactome:R-HSA-70268 |

Alternative Names

L-lactate dehydrogenase A-like 6B

St John's Laboratory Ltd

F +44 (0)207 681 2580

T +44 (0)208 223 3081

W <http://www.stjohnslabs.com/>

E info@stjohnslabs.com