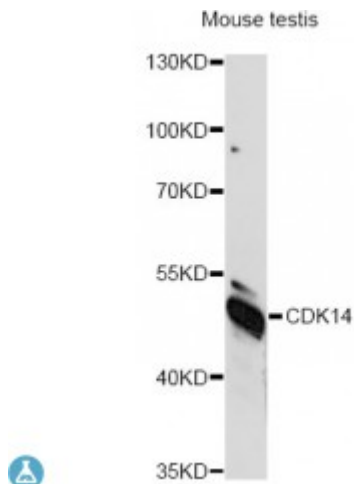


Anti-CDK14 Antibody



Model	STJ117185
Host	Rabbit
Reactivity	Mouse
Applications	WB
Immunogen	Recombinant fusion protein containing a sequence corresponding to amino acids 312-451 of human CDK14 (NP_036527.1).
Gene ID	5218
Gene Symbol	CDK14
Dilution range	WB 1:500 - 1:2000
Tissue Specificity	Highly expressed in brain, pancreas, kidney, heart, testis and ovary, Also detected at lower levels in other tissues except in spleen and thymus where expression is barely detected
Purification	Affinity purification
Note	For Research Use Only (RUO).
Protein Name	Cyclin-dependent kinase 14
Molecular Weight	53.057 kDa
Clonality	Polyclonal
Conjugation	Unconjugated
Isotype	IgG
Formulation	PBS with 0.02% sodium azide, 50% glycerol, pH7.3.
Storage Instruction	Store at -20C. Avoid freeze / thaw cycles.

Database Links	HGNC:8883OMIM:610679
Alternative Names	Cyclin-dependent kinase 14
Function	Serine/threonine-protein kinase involved in the control of the eukaryotic cell cycle, whose activity is controlled by an associated cyclin, Acts as a cell-cycle regulator of Wnt signaling pathway during G2/M phase by mediating the phosphorylation of LRP6 at 'Ser-1490', leading to the activation of the Wnt signaling pathway, Acts as a regulator of cell cycle progression and cell proliferation via its interaction with CCDN3, Phosphorylates RB1 in vitro, however the relevance of such result remains to be confirmed in vivo, May also play a role in meiosis, neuron differentiation and may indirectly act as a negative regulator of insulin-responsive glucose transport,
Cellular Localization	Cell membrane

St John's Laboratory Ltd

F +44 (0)207 681 2580

T +44 (0)208 223 3081

W <http://www.stjohnslabs.com/>

E info@stjohnslabs.com