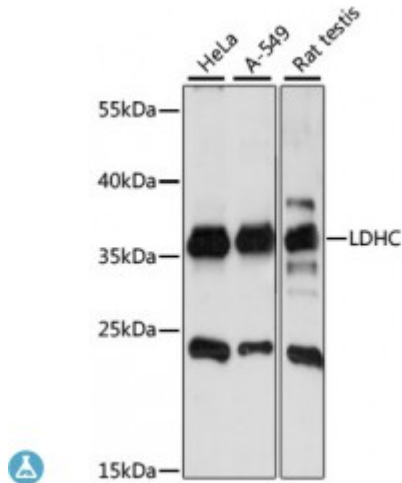


Anti-LDHC Antibody



Description

Lactate dehydrogenase C catalyzes the conversion of L-lactate and NAD to pyruvate and NADH in the final step of anaerobic glycolysis. LDHC is testis-specific and belongs to the lactate dehydrogenase family. Two transcript variants have been detected which differ in the 5' untranslated region.

| | |
|-------------------------|---|
| Model | STJ117200 |
| Host | Rabbit |
| Reactivity | Human, Mouse, Rat |
| Applications | WB |
| Immunogen | A synthetic peptide corresponding to a sequence within amino acids 150-250 of human LDHC (NP_002292.1). |
| Gene ID | 3948 |
| Gene Symbol | LDHC |
| Dilution range | WB 1:500 - 1:2000 |
| Purification | Affinity purification |
| Note | For Research Use Only (RUO). |
| Protein Name | L-lactate dehydrogenase C chain LDH-C |
| Molecular Weight | 36.311 kDa |
| Clonality | Polyclonal |
| Conjugation | Unconjugated |

| | |
|------------------------------|--|
| Isotype | IgG |
| Formulation | PBS with 0.02% sodium azide, 50% glycerol, pH7.3. |
| Storage Instruction | Store at -20C. Avoid freeze / thaw cycles. |
| Database Links | HGNC:6544OMIM:150150Reactome:R-HSA-70268 |
| Alternative Names | L-lactate dehydrogenase C chain LDH-C |
| Function | Possible role in sperm motility |
| Cellular Localization | Cytoplasm |

St John's Laboratory Ltd

F +44 (0)207 681 2580

T +44 (0)208 223 3081

W <http://www.stjohnslabs.com/>

E info@stjohnslabs.com