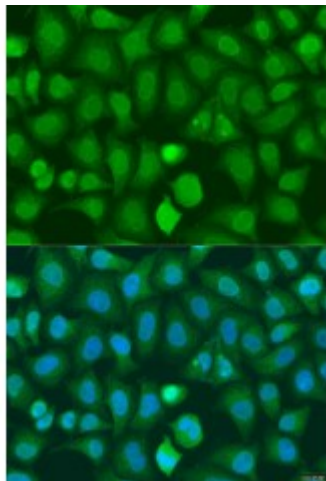


Anti-CHD1 Antibody



Description

The CHD family of proteins is characterized by the presence of chromo (chromatin organization modifier) domains and SNF2-related helicase/ATPase domains. CHD genes alter gene expression possibly by modification of chromatin structure thus altering access of the transcriptional apparatus to its chromosomal DNA template.

Model	STJ117232
Host	Rabbit
Reactivity	Human
Applications	IF, WB
Immunogen	Recombinant fusion protein containing a sequence corresponding to amino acids 1501-1710 of human CHD1 (NP_001261.2).
Gene ID	1105
Gene Symbol	CHD1
Dilution range	WB 1:500 - 1:2000 IF 1:50 - 1:200
Purification	Affinity purification
Note	For Research Use Only (RUO).
Protein Name	Chromodomain-helicase-DNA-binding protein 1 CHD-1
Molecular Weight	196.688 kDa
Clonality	Polyclonal
Conjugation	Unconjugated

Isotype	IgG
Formulation	PBS with 0.02% sodium azide, 50% glycerol, pH7.3.
Storage Instruction	Store at -20C. Avoid freeze / thaw cycles.
Database Links	HGNC:19150MIM:602118
Alternative Names	Chromodomain-helicase-DNA-binding protein 1 CHD-1
Function	ATP-dependent chromatin-remodeling factor which functions as substrate recognition component of the transcription regulatory histone acetylation (HAT) complex SAGA, Regulates polymerase II transcription, Also required for efficient transcription by RNA polymerase I, and more specifically the polymerase I transcription termination step, Regulates negatively DNA replication, Not only involved in transcription-related chromatin-remodeling, but also required to maintain a specific chromatin configuration across the genome, Is also associated with histone deacetylase (HDAC) activity , Required for the bridging of SNF2, the FACT complex, the PAF complex as well as the U2 snRNP complex to H3K4me3, Functions to modulate the efficiency of pre-mRNA splicing in part through physical bridging of spliceosomal components to H3K4me3, Required for maintaining open chromatin and pluripotency in embryonic stem cells,
Cellular Localization	Nucleus