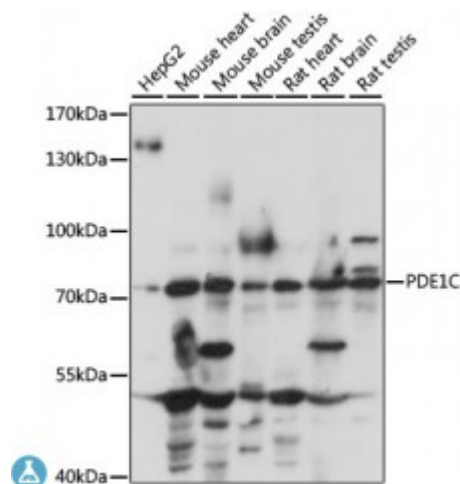


Anti-PDE1C Antibody



Description

This gene encodes an enzyme that belongs to the 3'5'-cyclic nucleotide phosphodiesterase family. Members of this family catalyze hydrolysis of the cyclic nucleotides, cyclic adenosine monophosphate and cyclic guanosine monophosphate, to the corresponding nucleoside 5'-monophosphates. The enzyme encoded by this gene regulates proliferation and migration of vascular smooth muscle cells, and neointimal hyperplasia. This enzyme also plays a role in pathological vascular remodeling by regulating the stability of growth factor receptors, such as PDGF-receptor-beta.

Model	STJ117272
Host	Rabbit
Reactivity	Human, Mouse, Rat
Applications	WB
Immunogen	Recombinant fusion protein containing a sequence corresponding to amino acids 435-634 of human PDE1C (NP_001177985.1).
Gene ID	5137
Gene Symbol	PDE1C
Dilution range	WB 1:500 - 1:2000
Tissue Specificity	Expressed in several tissues, including brain and heart
Purification	Affinity purification
Note	For Research Use Only (RUO).
Protein Name	Calcium/calmodulin-dependent 3',5'-cyclic nucleotide phosphodiesterase 1C

	Cam-PDE 1C
Molecular Weight	80.76 kDa
Clonality	Polyclonal
Conjugation	Unconjugated
Isotype	IgG
Formulation	PBS with 0.02% sodium azide, 50% glycerol, pH7.3.
Storage Instruction	Store at -20C. Avoid freeze / thaw cycles.
Database Links	HGNC:8776OMIM:602987Reactome:R-HSA-111957
Alternative Names	Calcium/calmodulin-dependent 3',5'-cyclic nucleotide phosphodiesterase 1C Cam-PDE 1C
Function	Cyclic nucleotide phosphodiesterase with a dual-specificity for the second messengers cAMP and cGMP, which are key regulators of many important physiological processes, Has a high affinity for both cAMP and cGMP

St John's Laboratory Ltd

F +44 (0)207 681 2580

T +44 (0)208 223 3081

W <http://www.stjohnslabs.com/>

E info@stjohnslabs.com