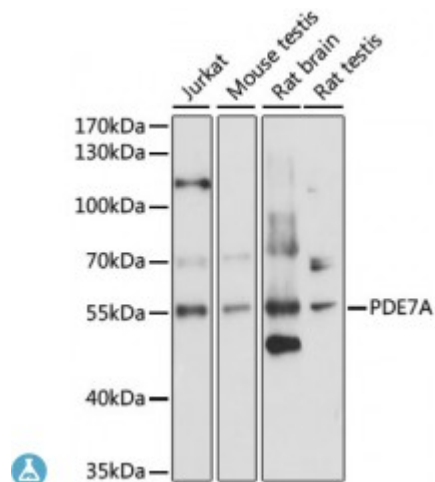


Anti-PDE7A Antibody



Description

The protein encoded by this gene belongs to the cyclic nucleotide phosphodiesterase (PDE) family, and PDE7 subfamily. This PDE hydrolyzes the second messenger, cAMP, which is a regulator and mediator of a number of cellular responses to extracellular signals. Thus, by regulating the cellular concentration of cAMP, this protein plays a key role in many important physiological processes. Alternatively spliced transcript variants encoding different isoforms have been described for this gene.

Model	STJ117273
Host	Rabbit
Reactivity	Human, Mouse, Rat
Applications	WB
Immunogen	Recombinant fusion protein containing a sequence corresponding to amino acids 345-456 of human PDE7A (NP_002594.1).
Gene ID	5150
Gene Symbol	PDE7A
Dilution range	WB 1:500 - 1:2000
Tissue Specificity	PDE7A1 is found at high levels in skeletal muscle and at low levels in a variety of tissues including brain and heart, It is expressed as well in two T-cell lines, PDE7A2 is found abundantly in skeletal muscle and at low levels in heart
Purification	Affinity purification
Note	For Research Use Only (RUO).

Protein Name	High affinity cAMP-specific 3',5'-cyclic phosphodiesterase 7A
Molecular Weight	55.505 kDa
Clonality	Polyclonal
Conjugation	Unconjugated
Isotype	IgG
Formulation	PBS with 0.02% sodium azide, 50% glycerol, pH7.3.
Storage Instruction	Store at -20C. Avoid freeze / thaw cycles.
Database Links	HGNC:8791 OMIM:171885 Reactome:R-HSA-418555
Alternative Names	High affinity cAMP-specific 3',5'-cyclic phosphodiesterase 7A
Function	Hydrolyzes the second messenger cAMP, which is a key regulator of many important physiological processes, May have a role in muscle signal transduction,
Cellular Localization	Isoform PDE7A1: Cytoplasm, cytosol, Isoform PDE7A2: Cytoplasm,

St John's Laboratory Ltd

F +44 (0)207 681 2580

T +44 (0)208 223 3081

W <http://www.stjohnslabs.com/>

E info@stjohnslabs.com