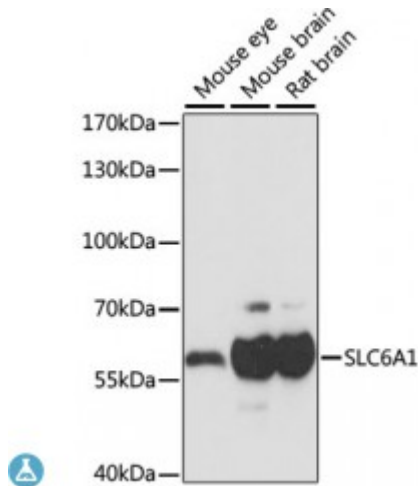


Anti-SLC6A1 Antibody



Description

The protein encoded by this gene is a gamma-aminobutyric acid (GABA) transporter that localizes to the plasma membrane. The encoded protein removes GABA from the synaptic cleft, restoring it to presynaptic terminals.

Model	STJ117293
Host	Rabbit
Reactivity	Mouse, Rat
Applications	WB
Immunogen	A synthetic peptide of human SLC6A1
Gene ID	6529
Gene Symbol	SLC6A1
Dilution range	WB 1:500 - 1:2000
Purification	Affinity purification
Note	For Research Use Only (RUO).
Protein Name	Sodium- and chloride-dependent GABA transporter 1 GAT-1 Solute carrier family 6 member 1
Molecular Weight	67.074 kDa
Clonality	Polyclonal
Conjugation	Unconjugated
Isotype	IgG

Formulation	PBS with 0.02% sodium azide, 50% glycerol, pH7.3.
Storage Instruction	Store at -20C. Avoid freeze / thaw cycles.
Database Links	HGNC:11042OMIM:137165Reactome:R-HSA-442660
Alternative Names	Sodium- and chloride-dependent GABA transporter 1 GAT-1 Solute carrier family 6 member 1
Function	Terminates the action of GABA by its high affinity sodium-dependent reuptake into presynaptic terminals
Cellular Localization	Cell membrane

St John's Laboratory Ltd

F +44 (0)207 681 2580

T +44 (0)208 223 3081

W <http://www.stjohnslabs.com/>

E info@stjohnslabs.com