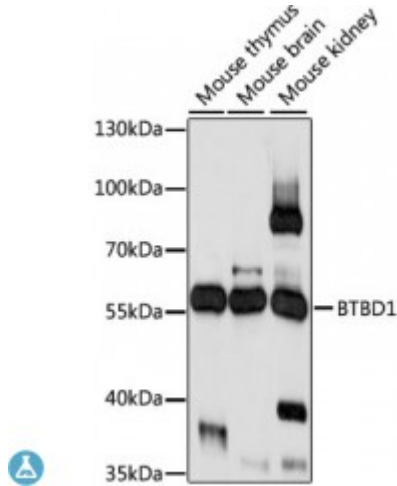


Anti-BTBD1 Antibody



Description

The C-terminus of the protein encoded by this gene binds topoisomerase I. The N-terminus contains a proline-rich region and a BTB/POZ domain (broad-complex, Tramtrack and bric a brac/Pox virus and Zinc finger), both of which are typically involved in protein-protein interactions. Subcellularly, the protein localizes to cytoplasmic bodies. Alternative splicing results in multiple transcript variants encoding different isoforms.

Model	STJ117355
Host	Rabbit
Reactivity	Mouse
Applications	WB
Immunogen	A synthetic peptide corresponding to a sequence within amino acids 400 to the C-terminus of human BTBD1 (NP_079514.1).
Gene ID	53339
Gene Symbol	BTBD1
Dilution range	WB 1:500 - 1:2000
Tissue Specificity	Ubiquitous
Purification	Affinity purification
Note	For Research Use Only (RUO).
Protein Name	BTB/POZ domain-containing protein 1 Hepatitis C virus NS5A-transactivated protein 8 HCV NS5A-transactivated protein 8
Molecular Weight	52.771 kDa

Clonality	Polyclonal
Conjugation	Unconjugated
Isotype	IgG
Formulation	PBS with 0.02% sodium azide, 50% glycerol, pH7.3.
Storage Instruction	Store at -20C. Avoid freeze / thaw cycles.
Database Links	HGNC:11200MIM:608530Reactome:R-HSA-8951664
Alternative Names	BTB/POZ domain-containing protein 1 Hepatitis C virus NS5A-transactivated protein 8 HCV NS5A-transactivated protein 8
Function	Probable substrate-specific adapter of an E3 ubiquitin-protein ligase complex which mediates the ubiquitination and subsequent proteasomal degradation of target proteins,
Cellular Localization	Cytoplasm

St John's Laboratory Ltd

F +44 (0)207 681 2580

T +44 (0)208 223 3081

W <http://www.stjohnslabs.com/>

E info@stjohnslabs.com