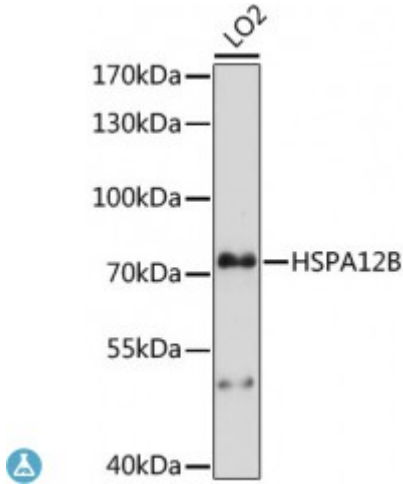


## Anti-HSPA12B Antibody



### Description

The protein encoded by this gene contains an atypical heat shock protein 70 (Hsp70) ATPase domain and is therefore a distant member of the mammalian Hsp70 family. This gene may be involved in susceptibility to atherosclerosis. Alternative splicing results in multiple transcript variants encoding different isoforms.

<b>Model</b>	STJ117400
<b>Host</b>	Rabbit
<b>Reactivity</b>	Human
<b>Applications</b>	WB
<b>Immunogen</b>	Recombinant fusion protein containing a sequence corresponding to amino acids 552-686 of human HSPA12B (NP_443202.3).
<b>Gene ID</b>	<a href="#">116835</a>
<b>Gene Symbol</b>	<a href="#">HSPA12B</a>
<b>Dilution range</b>	WB 1:500 - 1:2000
<b>Tissue Specificity</b>	Highest expression in muscle and heart, Lower levels in liver and kidney
<b>Purification</b>	Affinity purification
<b>Note</b>	For Research Use Only (RUO).
<b>Protein Name</b>	Heat shock 70 kDa protein 12B
<b>Molecular Weight</b>	75.688 kDa
<b>Clonality</b>	Polyclonal

<b>Conjugation</b>	Unconjugated
<b>Isotype</b>	IgG
<b>Formulation</b>	PBS with 0.02% sodium azide, 50% glycerol, pH7.3.
<b>Storage Instruction</b>	Store at -20C. Avoid freeze / thaw cycles.
<b>Database Links</b>	<a href="#">HGNC:16193OMIM:610702Reactome:R-HSA-3371453</a>
<b>Alternative Names</b>	Heat shock 70 kDa protein 12B

---

**St John's Laboratory Ltd**

**F** +44 (0)207 681 2580

**T** +44 (0)208 223 3081

**W** <http://www.stjohnslabs.com/>

**E** [info@stjohnslabs.com](mailto:info@stjohnslabs.com)