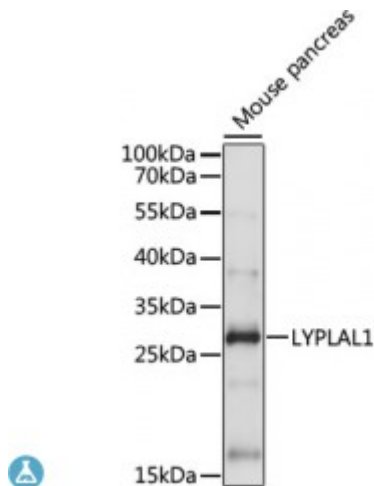


Anti-LYPLAL1 Antibody



Model	STJ117403
Host	Rabbit
Reactivity	Mouse
Applications	WB
Immunogen	A synthetic peptide corresponding to a sequence within amino acids 1-100 of human LYPLAL1 (NP_620149.2).
Gene ID	127018
Gene Symbol	LYPLAL1
Dilution range	WB 1:500 - 1:2000
Purification	Affinity purification
Note	For Research Use Only (RUO).
Protein Name	Lysophospholipase-like protein 1
Molecular Weight	26.316 kDa
Clonality	Polyclonal
Conjugation	Unconjugated
Isotype	IgG
Formulation	PBS with 0.02% sodium azide, 50% glycerol, pH7.3.
Storage Instruction	Store at -20C. Avoid freeze / thaw cycles.
Database Links	HGNC:20440 MIM:616548
Alternative Names	Lysophospholipase-like protein 1

Function	Has depalmitoylating activity toward KCNMA1, Does not exhibit phospholipase nor triacylglycerol lipase activity, able to hydrolyze only short chain substrates due to its shallow active site,
Cellular Localization	Cytoplasm, cytosol

St John's Laboratory Ltd

F +44 (0)207 681 2580

T +44 (0)208 223 3081

W <http://www.stjohnslabs.com/>

E info@stjohnslabs.com