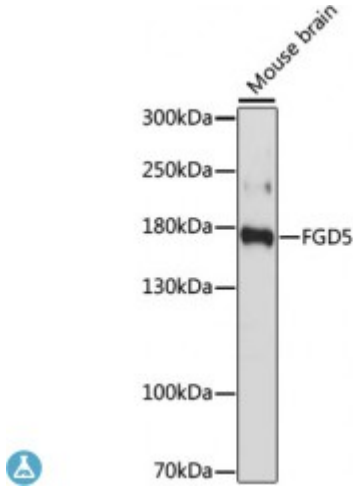


Anti-FGD5 Antibody



Model	STJ117406
Host	Rabbit
Reactivity	Mouse
Applications	WB
Immunogen	Recombinant fusion protein containing a sequence corresponding to amino acids 1000-1200 of human FGD5 (NP_689749.3).
Gene ID	152273
Gene Symbol	FGD5
Dilution range	WB 1:500 - 1:2000
Tissue Specificity	Expressed in endothelial cells (at protein level)
Purification	Affinity purification
Note	For Research Use Only (RUO).
Protein Name	FYVE RhoGEF and PH domain-containing protein 5 Zinc finger FYVE domain-containing protein 23
Molecular Weight	159.891 kDa
Clonality	Polyclonal
Conjugation	Unconjugated
Isotype	IgG
Formulation	PBS with 0.02% sodium azide, 50% glycerol, pH7.3.
Storage Instruction	Store at -20C. Avoid freeze / thaw cycles.
Database Links	HGNC:19117OMIM:614788

Alternative Names	FYVE RhoGEF and PH domain-containing protein 5 Zinc finger FYVE domain-containing protein 23
Function	Activates CDC42, a member of the Ras-like family of Rho- and Rac proteins, by exchanging bound GDP for free GTP, Mediates VEGF-induced CDC42 activation, May regulate proangiogenic action of VEGF in vascular endothelial cells, including network formation, directional movement and proliferation, May play a role in regulating the actin cytoskeleton and cell shape,
Cellular Localization	Cytoplasm, cytoskeleton,

St John's Laboratory Ltd

F +44 (0)207 681 2580

T +44 (0)208 223 3081

W <http://www.stjohnslabs.com/>

E info@stjohnslabs.com