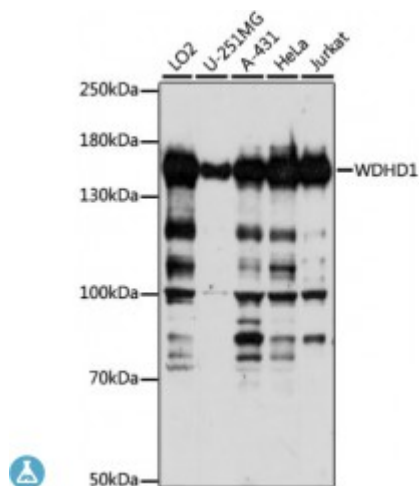


Anti-WDHD1 Antibody



Description

The protein encoded by this gene contains multiple N-terminal WD40 domains and a C-terminal high mobility group (HMG) box. WD40 domains are found in a variety of eukaryotic proteins and may function as adaptor/regulatory modules in signal transduction, pre-mRNA processing and cytoskeleton assembly. HMG boxes are found in many eukaryotic proteins involved in chromatin assembly, transcription and replication. Alternative splicing results in two transcript variants encoding different isoforms.

| | |
|-------------------------|--|
| Model | STJ117591 |
| Host | Rabbit |
| Reactivity | Human |
| Applications | WB |
| Immunogen | Recombinant fusion protein containing a sequence corresponding to amino acids 830-1129 of human WDHD1 (NP_009017.1). |
| Gene ID | 11169 |
| Gene Symbol | WDHD1 |
| Dilution range | WB 1:200 - 1:2000 |
| Purification | Affinity purification |
| Note | For Research Use Only (RUO). |
| Protein Name | WD repeat and HMG-box DNA-binding protein 1 Acidic nucleoplasmic DNA-binding protein 1 And-1 |
| Molecular Weight | 125.967 kDa |

| | |
|------------------------------|---|
| Clonality | Polyclonal |
| Conjugation | Unconjugated |
| Isotype | IgG |
| Formulation | PBS with 0.02% sodium azide, 50% glycerol, pH7.3. |
| Storage Instruction | Store at -20C. Avoid freeze / thaw cycles. |
| Database Links | HGNC:231700MIM:608126 |
| Alternative Names | WD repeat and HMG-box DNA-binding protein 1 Acidic nucleoplasmic DNA-binding protein 1 And-1 |
| Function | Acts as a replication initiation factor that brings together the MCM2-7 helicase and the DNA polymerase alpha/primase complex in order to initiate DNA replication, |
| Cellular Localization | Nucleus, nucleoplasm |

St John's Laboratory Ltd

F +44 (0)207 681 2580

T +44 (0)208 223 3081

W <http://www.stjohnslabs.com/>

E info@stjohnslabs.com