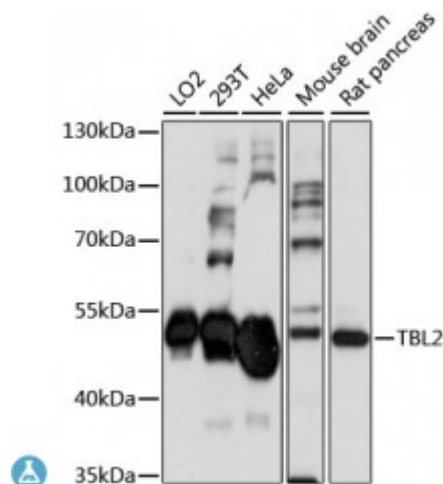


## Anti-TBL2 Antibody



### Description

This gene encodes a member of the beta-transducin protein family. Most proteins of the beta-transducin family are involved in regulatory functions. This protein is possibly involved in some intracellular signaling pathway. This gene is deleted in Williams-Beuren syndrome, a developmental disorder caused by deletion of multiple genes at 7q11.23.

<b>Model</b>	STJ117624
<b>Host</b>	Rabbit
<b>Reactivity</b>	Human, Mouse, Rat
<b>Applications</b>	WB
<b>Immunogen</b>	Recombinant fusion protein containing a sequence corresponding to amino acids 100-430 of human TBL2 (NP_036585.1).
<b>Gene ID</b>	<a href="#">26608</a>
<b>Gene Symbol</b>	<a href="#">TBL2</a>
<b>Dilution range</b>	WB 1:200 - 1:2000
<b>Purification</b>	Affinity purification
<b>Note</b>	For Research Use Only (RUO).
<b>Protein Name</b>	Transducin beta-like protein 2 WS beta-transducin repeats protein WS-betaTRP Williams-Beuren syndrome chromosomal region 13 protein
<b>Molecular Weight</b>	49.798 kDa
<b>Clonality</b>	Polyclonal
<b>Conjugation</b>	Unconjugated

<b>Isotype</b>	IgG
<b>Formulation</b>	PBS with 0.02% sodium azide, 50% glycerol, pH7.3.
<b>Storage Instruction</b>	Store at -20C. Avoid freeze / thaw cycles.
<b>Database Links</b>	<a href="#">HGNC:11586OMIM:605842</a>
<b>Alternative Names</b>	Transducin beta-like protein 2 WS beta-transducin repeats protein WS-betaTRP Williams-Beuren syndrome chromosomal region 13 protein

---

**St John's Laboratory Ltd**

**F** +44 (0)207 681 2580

**T** +44 (0)208 223 3081

**W** <http://www.stjohnslabs.com/>

**E** [info@stjohnslabs.com](mailto:info@stjohnslabs.com)