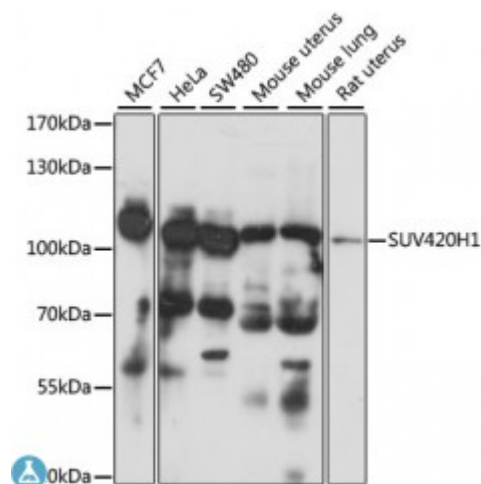


## Anti-KMT5B Antibody



### Description

This gene encodes a protein that contains a SET domain. SET domains appear to be protein-protein interaction domains that mediate interactions with a family of proteins that display similarity with dual-specificity phosphatases (dsPTPases). The function of this gene has not been determined. Several alternatively spliced transcript variants encoding different isoforms have been found for this gene.

<b>Model</b>	STJ117637
<b>Host</b>	Rabbit
<b>Reactivity</b>	Human, Mouse, Rat
<b>Applications</b>	WB
<b>Immunogen</b>	A synthetic peptide corresponding to a sequence within amino acids 100-200 of human SUV420H1 (NP_060105.3).
<b>Gene ID</b>	<a href="#">51111</a>
<b>Gene Symbol</b>	<a href="#">KMT5B</a>
<b>Dilution range</b>	WB 1:200 - 1:2000
<b>Purification</b>	Affinity purification
<b>Note</b>	For Research Use Only (RUO).
<b>Protein Name</b>	Histone-lysine N-methyltransferase KMT5B
<b>Molecular Weight</b>	99.187 kDa
<b>Clonality</b>	Polyclonal
<b>Conjugation</b>	Unconjugated

<b>Isotype</b>	IgG
<b>Formulation</b>	PBS with 0.02% sodium azide, 50% glycerol, pH7.3.
<b>Storage Instruction</b>	Store at -20C. Avoid freeze / thaw cycles.
<b>Database Links</b>	<a href="#">HGNC:24283OMIM:610881Reactome:R-HSA-3214841</a>
<b>Alternative Names</b>	Histone-lysine N-methyltransferase KMT5B
<b>Function</b>	Histone methyltransferase that specifically trimethylates 'Lys-20' of histone H4, H4 'Lys-20' trimethylation represents a specific tag for epigenetic transcriptional repression, Mainly functions in pericentric heterochromatin regions, thereby playing a central role in the establishment of constitutive heterochromatin in these regions, KMT5B is targeted to histone H3 via its interaction with RB1 family proteins (RB1, RBL1 and RBL2) , Plays a role in myogenesis by regulating the expression of target genes, such as EID3,
<b>Cellular Localization</b>	Nucleus,

---

**St John's Laboratory Ltd**

**F** +44 (0)207 681 2580

**T** +44 (0)208 223 3081

**W** <http://www.stjohnslabs.com/>

**E** [info@stjohnslabs.com](mailto:info@stjohnslabs.com)