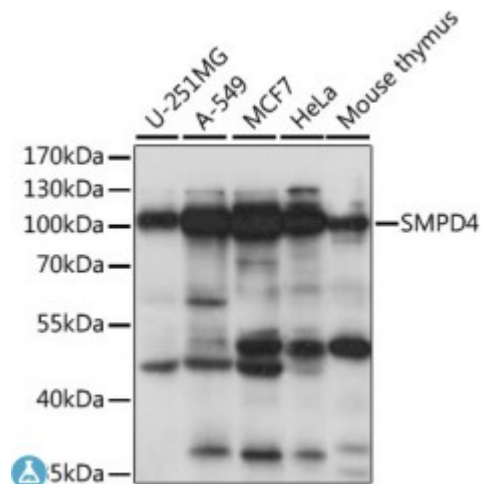


Anti-SMPD4 Antibody



Description

The protein encoded by this gene is a sphingomyelinase that catalyzes the hydrolysis of membrane sphingomyelin to form phosphorylcholine and ceramide. This gene is activated by DNA damage, cellular stress, and tumor necrosis factor, but it is downregulated by wild-type p53. The encoded protein localizes to the endoplasmic reticulum and Golgi network.

Model	STJ117668
Host	Rabbit
Reactivity	Human, Mouse
Applications	WB
Immunogen	Recombinant fusion protein containing a sequence corresponding to amino acids 600-800 of human SMPD4 (NP_060421.2).
Gene ID	55627
Gene Symbol	SMPD4
Dilution range	WB 1:200 - 1:2000
Tissue Specificity	Widely expressed, with highest levels in heart and skeletal muscle
Purification	Affinity purification
Note	For Research Use Only (RUO).
Protein Name	Sphingomyelin phosphodiesterase 4
Molecular Weight	93.352 kDa
Clonality	Polyclonal

Conjugation	Unconjugated
Isotype	IgG
Formulation	PBS with 0.02% sodium azide, 50% glycerol, pH7.3.
Storage Instruction	Store at -20C. Avoid freeze / thaw cycles.
Database Links	HGNC:32949 OMIM:610457 Reactome:R-HSA-1660662
Alternative Names	Sphingomyelin phosphodiesterase 4
Function	Catalyzes the hydrolysis of membrane sphingomyelin to form phosphorylcholine and ceramide,
Cellular Localization	Endoplasmic reticulum membrane

St John's Laboratory Ltd

F +44 (0)207 681 2580
T +44 (0)208 223 3081

W <http://www.stjohnslabs.com/>
E info@stjohnslabs.com